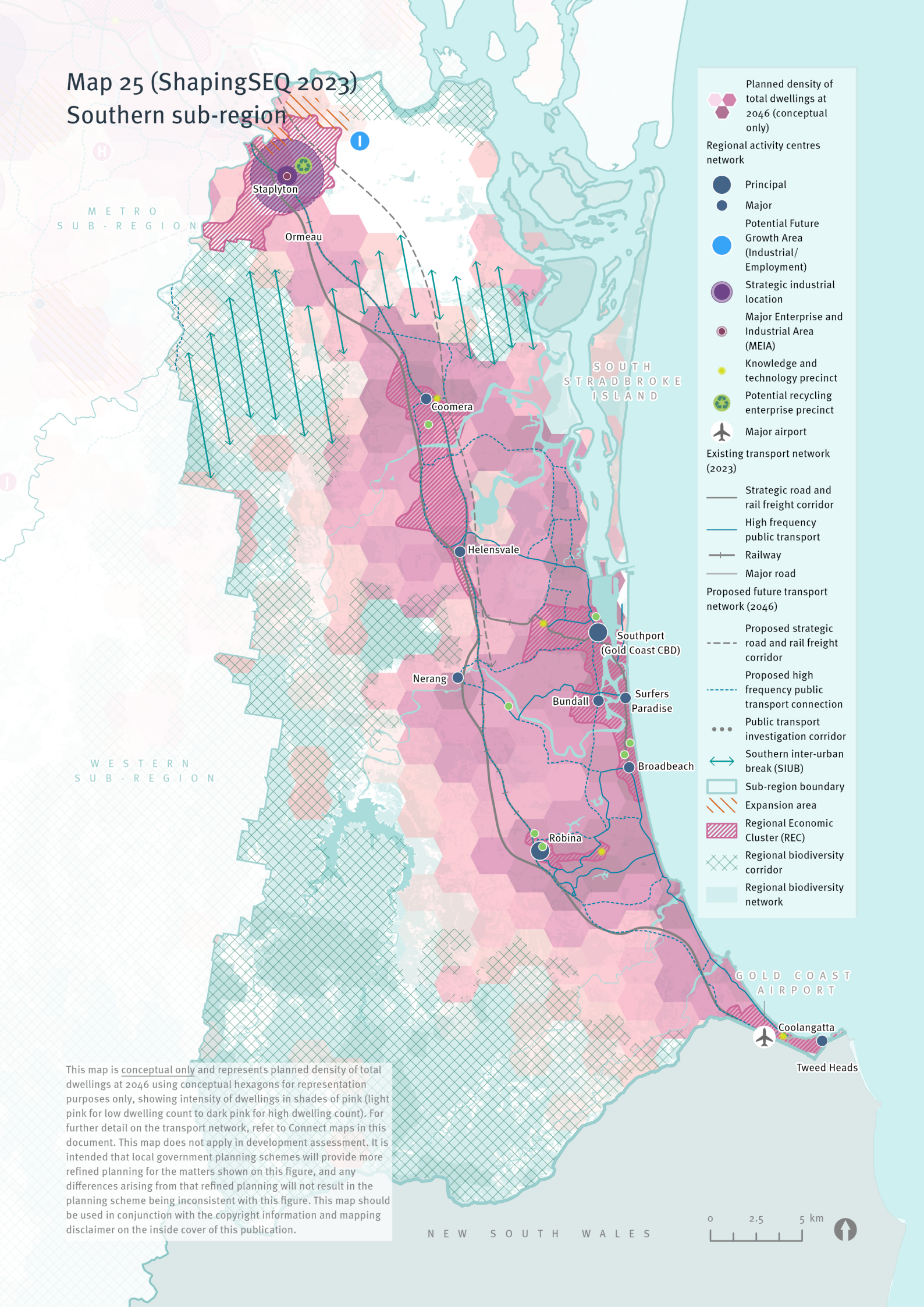


Map 25 (ShapingSEQ 2023) Southern sub-region



Planned density of total dwellings at 2046 (conceptual only)

Regional activity centres network

- Principal
- Major
- Potential Future Growth Area (Industrial/Employment)
- Strategic industrial location
- Major Enterprise and Industrial Area (MEIA)
- Knowledge and technology precinct
- Potential recycling enterprise precinct
- Major airport

Existing transport network (2023)

- Strategic road and rail freight corridor
- High frequency public transport
- Railway
- Major road

Proposed future transport network (2046)

- Proposed strategic road and rail freight corridor
- Proposed high frequency public transport connection
- Public transport investigation corridor
- Southern inter-urban break (SIUB)
- Sub-region boundary
- Expansion area
- Regional Economic Cluster (REC)
- Regional biodiversity corridor
- Regional biodiversity network

This map is conceptual only and represents planned density of total dwellings at 2046 using conceptual hexagons for representation purposes only, showing intensity of dwellings in shades of pink (light pink for low dwelling count to dark pink for high dwelling count). For further detail on the transport network, refer to Connect maps in this document. This map does not apply in development assessment. It is intended that local government planning schemes will provide more refined planning for the matters shown on this figure, and any differences arising from that refined planning will not result in the planning scheme being inconsistent with this figure. This map should be used in conjunction with the copyright information and mapping disclaimer on the inside cover of this publication.