


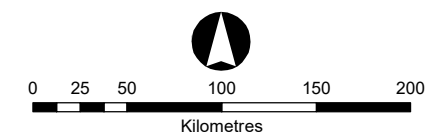
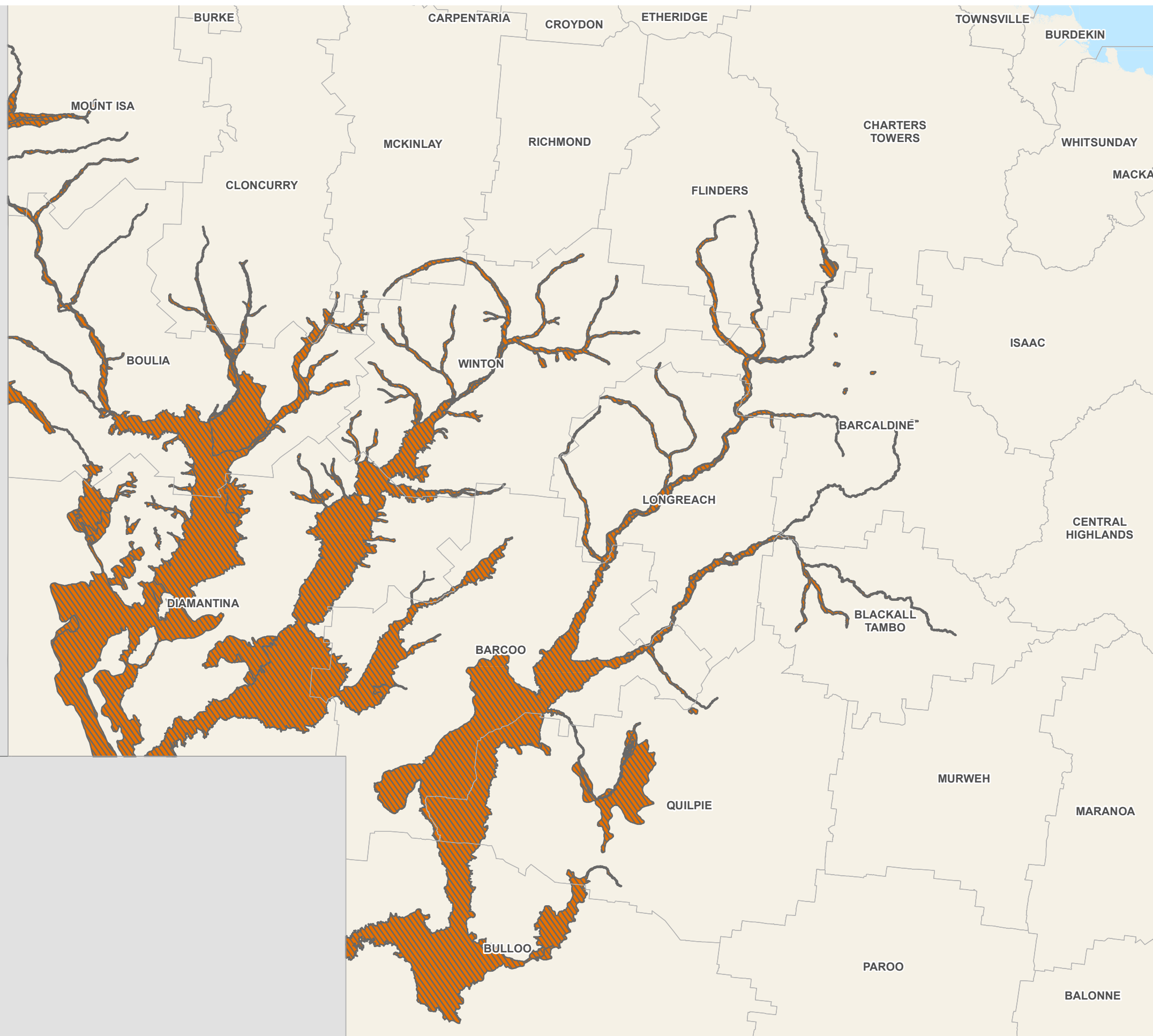


# Channel Country Strategic Environmental Area

Effective Date - 22/12/2023

## Legend

-  LGA Boundary
-  Strategic Environmental Area - Designated Precinct - 2014 Reach
-  Strategic Environmental Area - Designated Precinct - Critical Minerals Reach



Map created at: A3  
Coordinate System: GDA2020  
Datum: GDA2020

Map produced by the Department of Housing, Local Government, Planning and Public Works, Spatial Services Unit, 25/06/2024