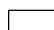



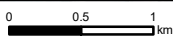


H:\Projects-SLR\620-BNE\620-30775-00000\New\Map\NAC03_GIS\06_SLR_Data\01_CAD\GIS\Map\GIS\LOM RIDA\SLR62030775_Appendix F_2013_ML50232.mxd

LEGEND

-  LoM RIDA – Indicative Mining Disturbance
-  Paddock Area
-  NAC's LoM RIDA Application (Year 6 until Mine closure) – Support Infrastructure Disturbance (Roads, Rail, Power and MHF)
-  Mining Lease



Scale: 1:52,500 at A4
Coordinate System: AGD 1984 AMG Zone 56

Date Drawn: 09-Oct-2024
Project Number: 620.30775



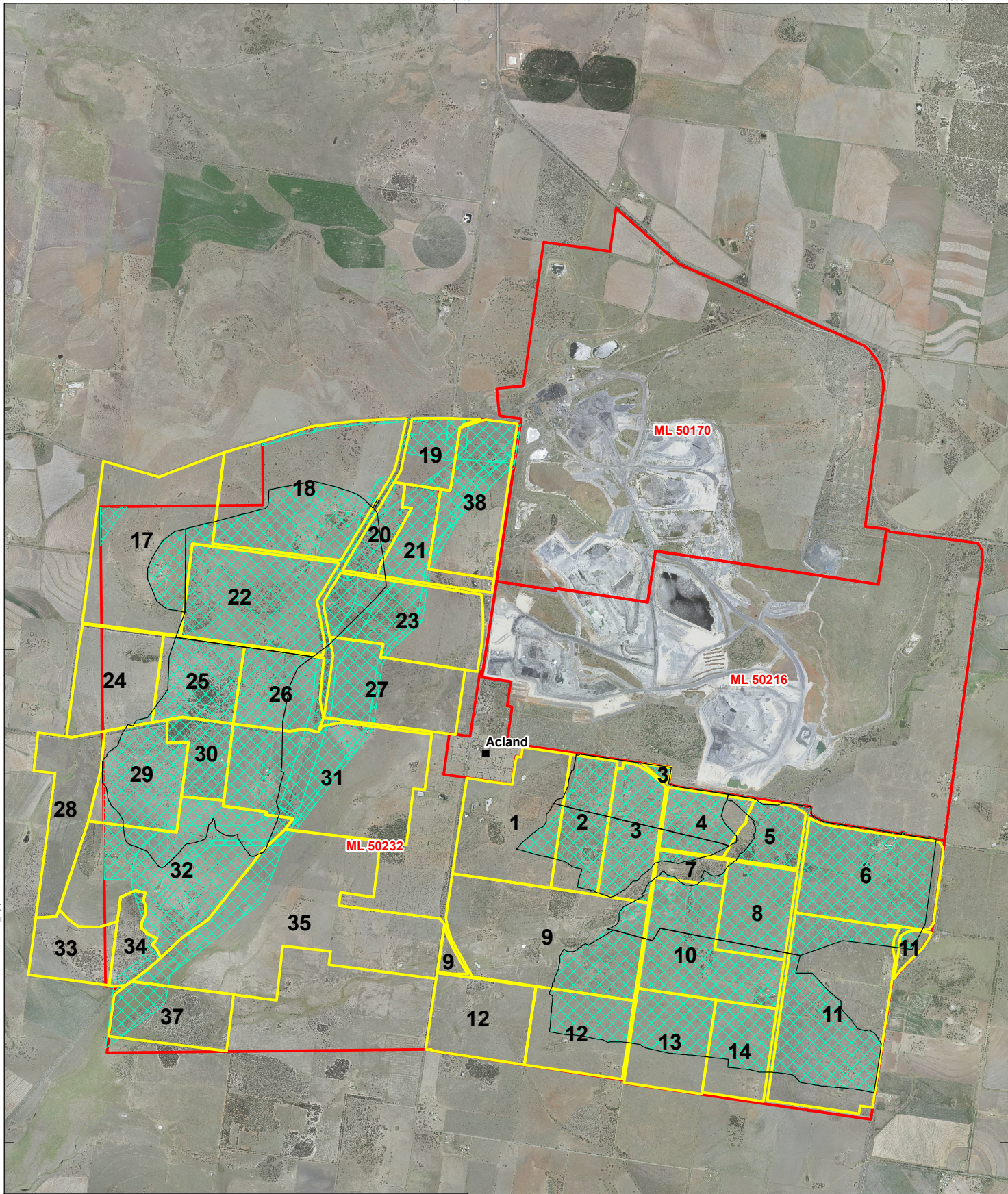
Sheet Size : A4



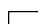



IMAGERY 2013

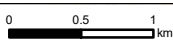
APPENDIX F

F:\Projects\SLR\620-BNE\620-30775-00000\New\Hope\NAC03\GIS\06\SLR\Data\01\CAD\GIS\ArcGIS\LOM RIDA\SLR62030775_Appendix F 2017.ML50232.mxd



LEGEND

-  LoM RIDA – Indicative Mining Disturbance
-  Paddock Area
-  NAC's LoM RIDA Application (Year 6 until Mine closure) – Support Infrastructure Disturbance (Roads, Rail, Power and MHF)
-  Mining Lease



Scale: 1:52,500 at A4
 Coordinate System: AGD 1984 AMG Zone 56

Date Drawn: 09-Oct-2024
 Project Number: 620.30775

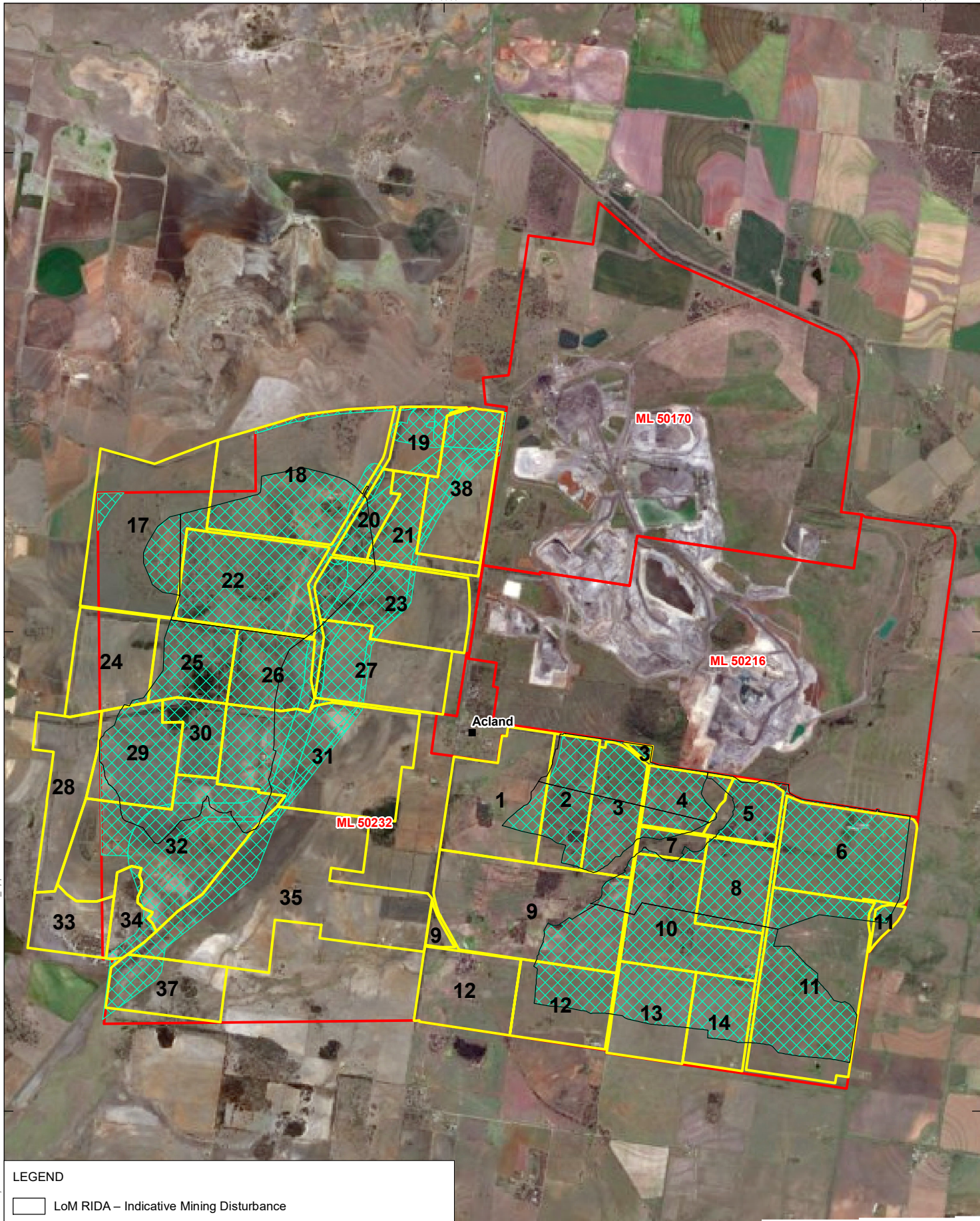


Sheet Size : A4



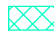



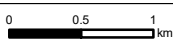
IMAGERY 2017

APPENDIX F



LEGEND

-  LoM RIDA – Indicative Mining Disturbance
-  Paddock Area
-  NAC's LoM RIDA Application (Year 6 until Mine closure) – Support Infrastructure Disturbance (Roads, Rail, Power and MHF)
-  Mining Lease



Scale: 1:52,500 at A4
 Coordinate System: AGD 1984 AMG Zone 56

Date Drawn: 09-Oct-2024
 Project Number: 620.30775



Sheet Size : A4

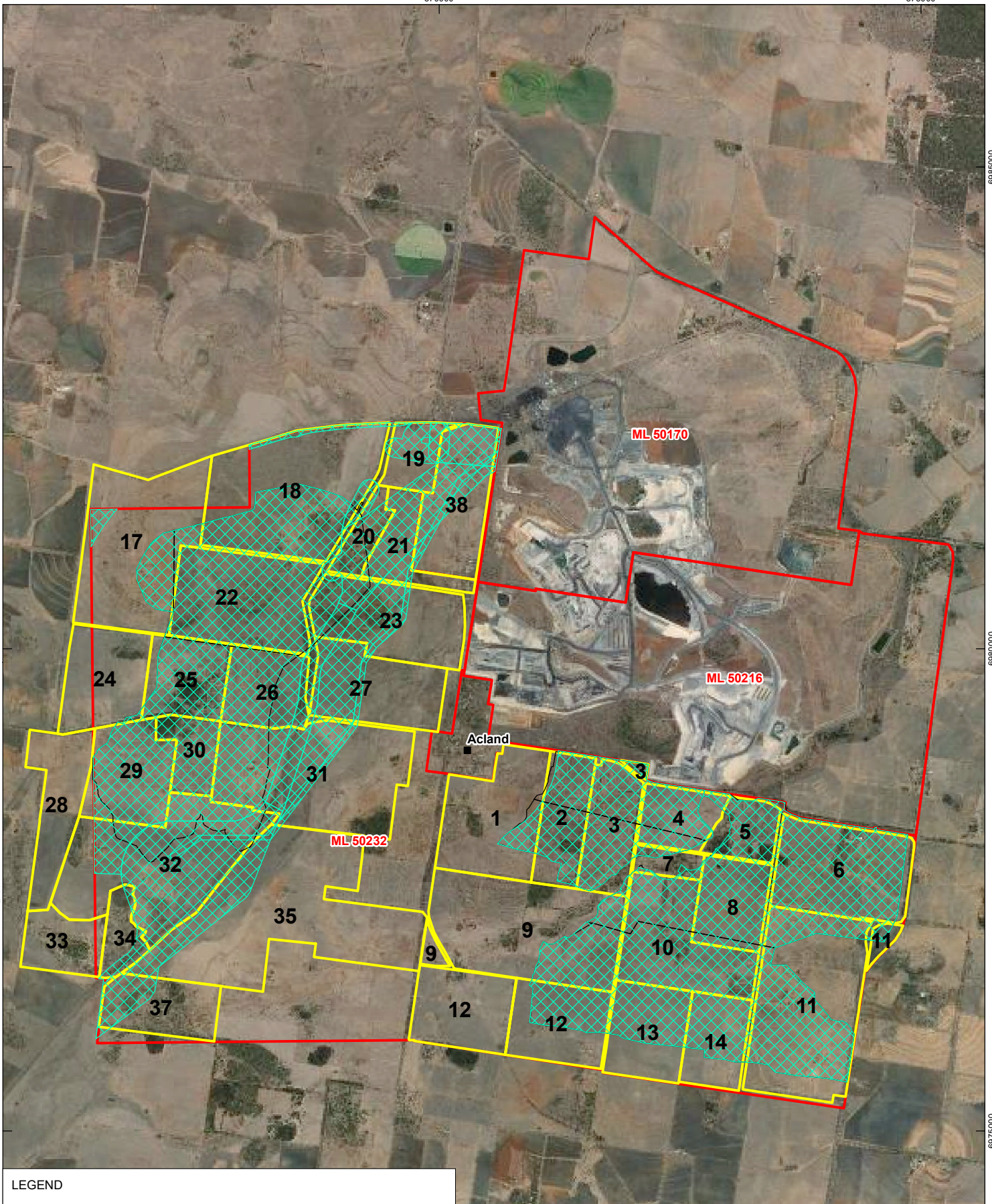


IMAGERY 2018


APPENDIX F

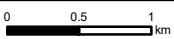
H:\Projects\SLR\620-BNE\620.30775_000000\New\Map\NAC03_GIS\06_SLR_Data\01_CAD\GIS\Map\GIS\LOM_RIDA\SLR62030775_Appendix F 2018_ML 50232.mxd

F:\Projects\SLR\620-BNE\620-BNE\620.30775_00000\New\Hope\NAC03\GIS\06\SLR_Data\01_CAD\GIS\Map\GIS\LOM RIDA\SLR62030775_Appendix F 2020_ML50232.mxd



LEGEND

-  LoM RIDA – Indicative Mining Disturbance
-  Paddock Area
-  NAC's LoM RIDA Application (Year 6 until Mine closure) – Support Infrastructure Disturbance (Roads, Rail, Power and MHF)
-  Mining Lease



Scale: 1:52,500 at A4
Coordinate System: AGD 1984 AMG Zone 56

Date Drawn: 09-Oct-2024
Project Number: 620.30775



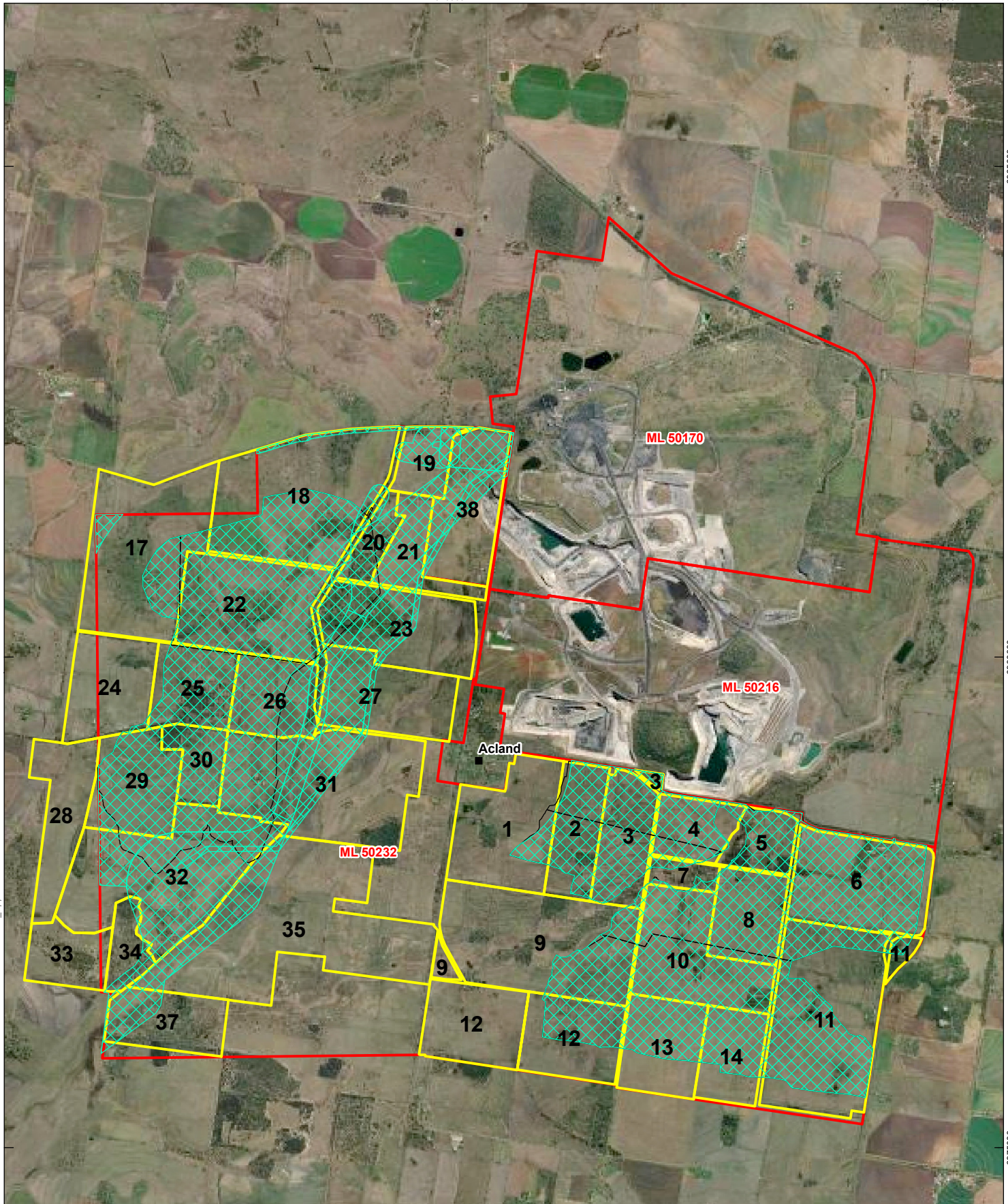
Sheet Size : A4




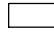


IMAGERY 2020

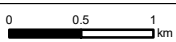
APPENDIX F

F:\Projects\SLR\620-BNE\620.30775_00000\New\Hope\MAC03_GIS\06_SLR_Data\01_CAD\GIS\ArcGIS\LOM_RIDA\SLR62030775_Appendix F 2021_ML50232.mxd



LEGEND

-  LoM RIDA – Indicative Support Infrastructure Disturbance (Roads, Rail, Power and MHF)
-  LoM RIDA – Indicative Mining Disturbance
-  Paddock Area
-  Mining Lease



Scale: 1:52,500 at A4
 Coordinate System: AGD 1984 AMG Zone 56

Date Drawn: 09-Oct-2024
 Project Number: 620.30775



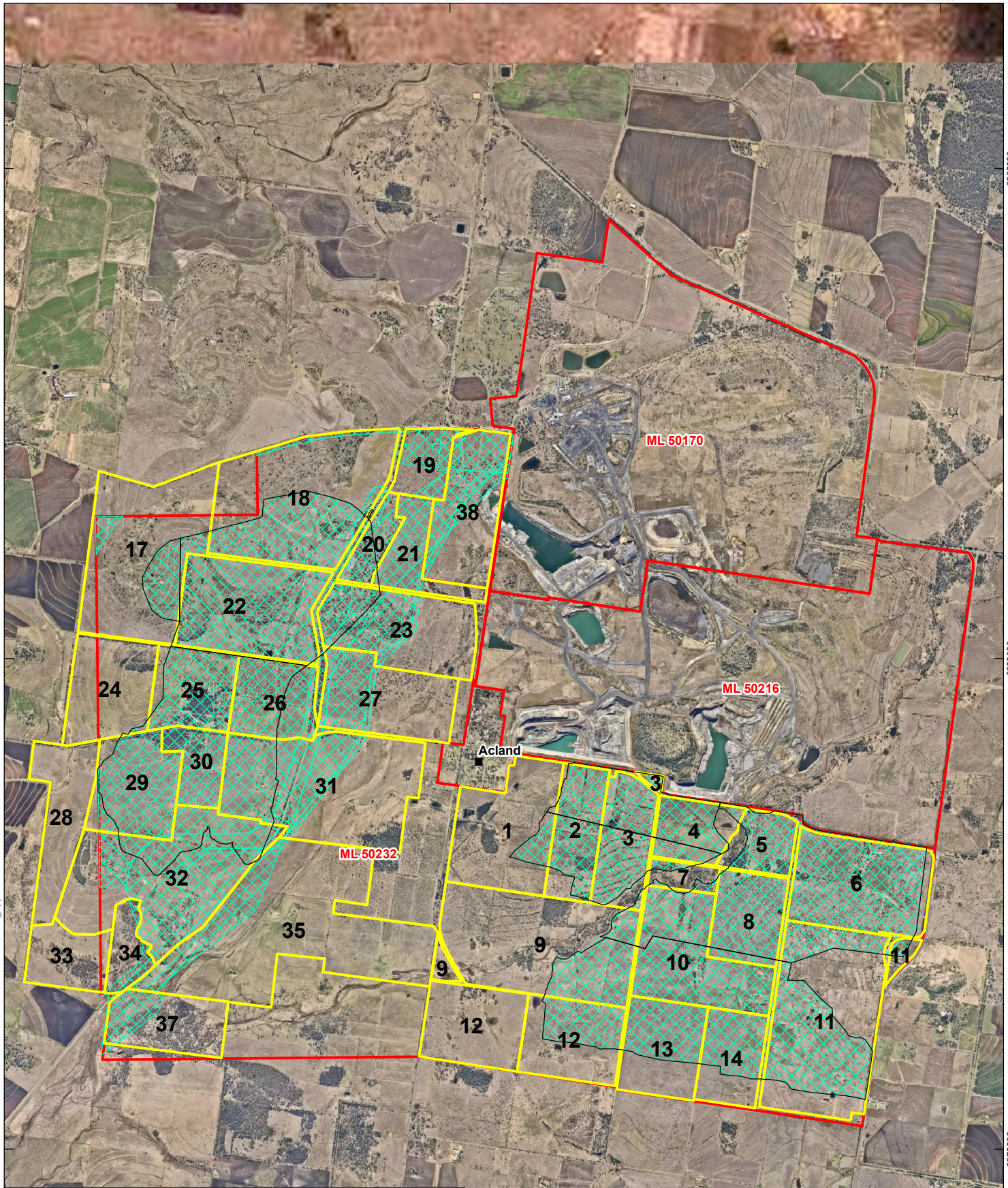
Sheet Size : A4



IMAGERY 2021

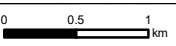
APPENDIX F

H:\Projects\SLR\620-BNE\620_30775_00000\New\Hope\NACC03_GIS\06_SLR_Data\01_CAD\GIS\Map\GIS\LOM RIDA\SLR62030775_Appendix F 2022_ML50232.mxd



LEGEND

- LoM RIDA – Indicative Mining Disturbance
- Paddock Area
- NAC's LOM RIDA Application (Year 6 until Mine closure) – Support Infrastructure Disturbance (Roads, Rail, Power and MHF)
- Mining Lease



Scale: 1:52,500 at A4
 Coordinate System: AGD 1984 AMG Zone 56

Date Drawn: 09-Oct-2024
 Project Number: 620.30775



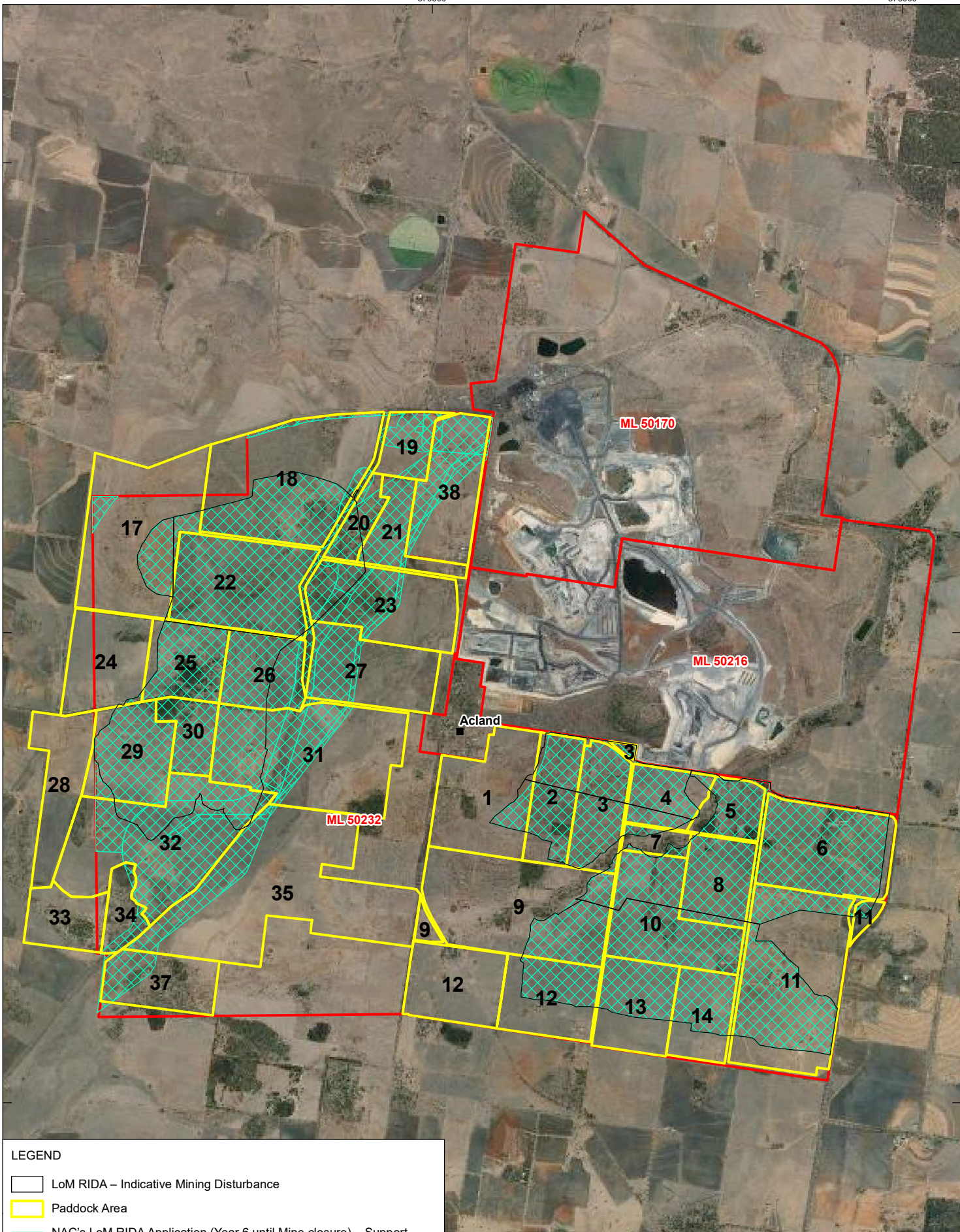
Sheet Size : A4



IMAGERY 2022

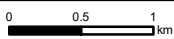
APPENDIX F

F:\Projects\SLR\620-BNE\620-BNE\620.30775_00000\New\Map\NAC\03 GIS\06 SLR_Data\01 CAD\GIS\ArcGIS\LOM RIDA\SLR62030775_Appendix F 2023.ML50232.mxd



LEGEND

-  LoM RIDA – Indicative Mining Disturbance
-  Paddock Area
-  NAC's LOM RIDA Application (Year 6 until Mine closure) – Support Infrastructure Disturbance (Roads, Rail, Power and MHF)
-  Mining Lease



Scale: 1:52,500 at A4
 Coordinate System: AGD 1984 AMG Zone 56

Date Drawn: 09-Oct-2024
 Project Number: 620.30775



Sheet Size : A4



IMAGERY 2023

APPENDIX F