

REGIONAL INTERESTS DEVELOPMENT APPROVAL (RIDA)

RPI21/001 BMA – Saraji East

(Given under section 53 of the *Regional Planning Interests Act 2014*)

Date: 18 October 2021

Description of the land

Real property description: Lot 101 SP310393
Address: 540 Lake Vermont Road, Dysart, QLD 4745
Local Government Area: Isaac Regional Council

Approved resource activities

The approved resource activity: mining and other resource activities and area of surface disturbance are set out in Table 1 below.

The definition of the approved resource activity is included in Table 2 below.

This development approval authorises impacts on the strategic cropping area by the approved resource activity.

Table 1: Approved resource activity and area of disturbance: Saraji East

Area of regional interest	Location	Resource activity	Area of disturbance (hectares) of verified strategic cropping land (SCL)
Strategic Cropping Area (SCA)	Lot 101 SP310393	Overhead powerline	13.39*
Total disturbance area of verified SCL			13.39

* An additional 6.90 ha of disturbance area has been confirmed as non-SCL area and is to be removed from the SCL trigger mapping

Table 2: Definition of approved resource activity

Resource activity	Definition
Overhead powerline	66 kilovolt overhead powerline, located within a 35m wide corridor for approximately 6.02 kms, with poles in pre-cast concrete pads and including structures, conductors and ground stays, with access tracks beside the centre line of the poles.

Regional interests conditions

A person who is the holder of, or is acting under, this RIDA must not contravene a condition of this approval.

Condition number	Condition	Timing for condition
1.	Carry out the approved resource activity and disturbance of land in the strategic cropping area generally in accordance with: <ul style="list-style-type: none"> (a) the resource activity and area of disturbance identified in Table 1: Approved resource activity and area of disturbance: Saraji East (b) the resource activity defined in Table 2: Definition of approved resource activity (c) the stamped approved plan – <i>Figure 3 Strategic Cropping Land</i>, dated 13/07/2021 Version 2 (Attachment 1). 	At all times.
2.	Maintain the approved resource activities generally in accordance with: <ul style="list-style-type: none"> (a) Table 1: Approved resource activity and area of disturbance (b) Table 2: Definition of resource activity (c) Approved Plan: <i>Figure 3 Strategic Cropping Land</i>, dated 13/07/2021 Version 2. 	During construction and operation of the approved resource activity.
3.	The maximum area of disturbance of verified SCL in the SCA that may occur as a result of this development approval is not to exceed 13.39 hectares.	At all times.
4.	Prepare an Erosion and Sediment Control Plan (ESCP) which must: <ul style="list-style-type: none"> (a) be prepared by a Certified Professional in Erosion and Sediment Control and should be consistent with Attachment E: Erosion and sediment control guideline in the <i>Queensland Soil and Land Resource Survey Information Guideline</i> (Department of Resources 2021). (b) achieve. <ul style="list-style-type: none"> i. no worsening of the existing levels of soil loss from the land within or downslope of the subject land ii. no increased risk of erosion, or other land degradation, on land or in waterways downslope of the subject land iii. no net increase in the sediment load leaving the development area and entering waterways and/or watercourses iv. no pollution of surface water as a result of soil erosion, soil degradation or changes in hydrology v. avoidance of any mixing of soil types or soils 	Prior to the commencement of works.

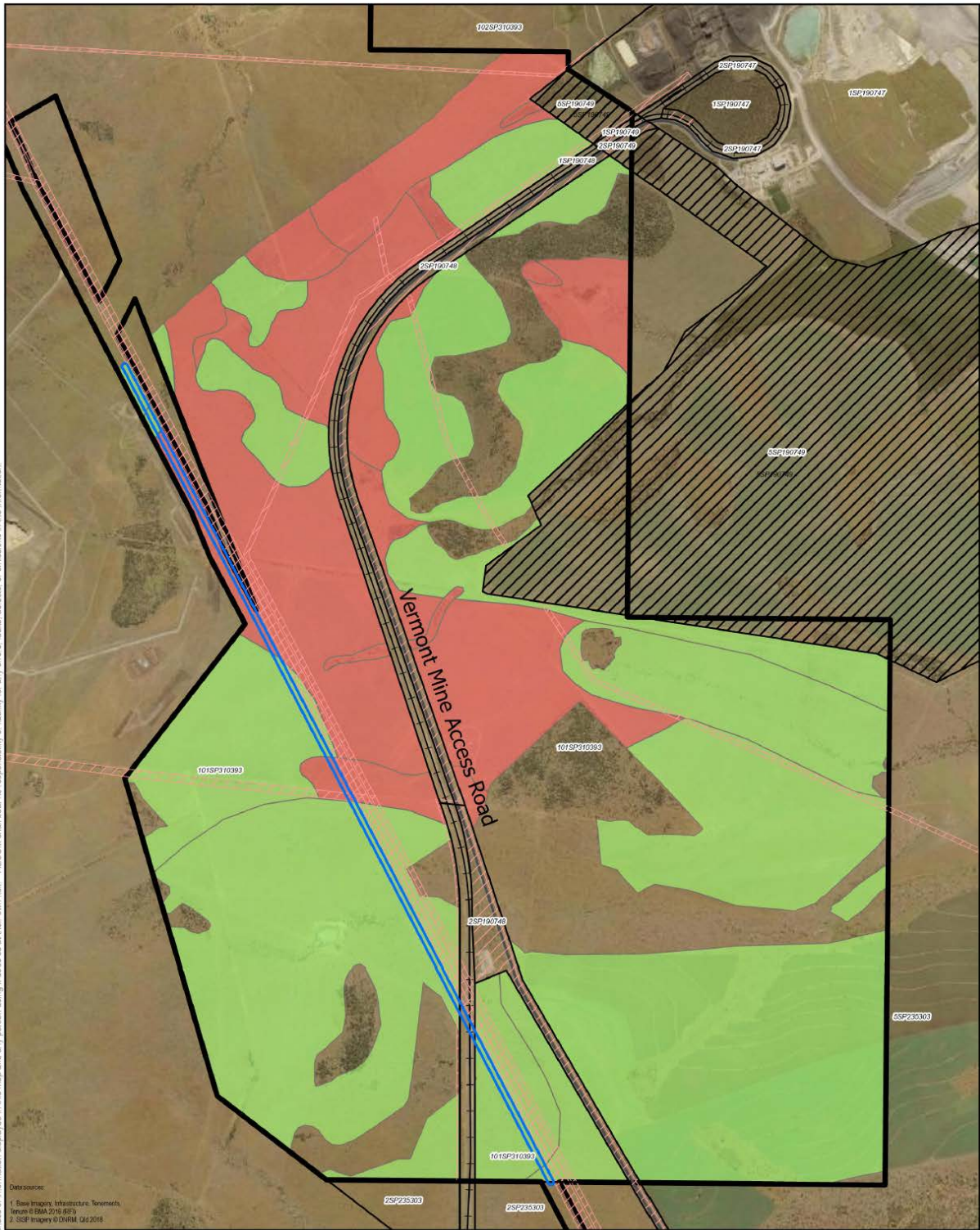
Condition number	Condition	Timing for condition
	<p>from different horizons</p> <ul style="list-style-type: none"> vi. stabilisation of any disturbed soil resource to avoid soil loss via erosion vii. an evaluation of the nature and risk of any predicted impacts on SCL associated with soil erosion and topsoil stripping. viii. suitably detailed maps or plans, drawn to scale, showing the proposed location of the activity and the relationship to SCL (including SCL on adjacent land, not the subject of the application). <p>(c) ascertain the predicted erodibility of the soils within each mapping unit and the pre-disturbance severity and extent of soil erosion prior to disturbance</p>	
5.	Restore the disturbance area of 13.39 ha of verified SCL in the SCA generally in accordance with 'Restoration Plan to Support RIDA Application Saraji East Project' Final V6 26 September 2021 prepared by GTenvironmental.	As soon as practicable and as and as indicated in the approved Restoration Plan.
6.	<p>Provide records to the chief executive (RPIAct@dSDLGP.qld.gov.au application reference number RPI21/001), demonstrating that the impacted verified SCL in the SCA has been returned to its pre-disturbance condition. Such records must include:</p> <ul style="list-style-type: none"> (a) photographs of the pre-disturbance site conditions (b) photographs of the post-reinstatement site conditions (c) photographs of the post-restoration site conditions (d) date and GPS stamped evidence, supporting parts (a) to (c) of this condition (e) monitoring reports and associated laboratory results (f) monitoring notes and photos of native vegetation establishment and comparison to pre-disturbance land use in the project site (g) independent review and field inspection by a third-party soil's consultant. <p><i>Note:</i> '<i>disturbance</i>' - means any impact to the landscape, vegetation, air quality, hydrology, habitat, or water quality that has been directly or indirectly caused by human activity associated with the resource activity.</p> <p><i>'pre-disturbance'</i> - the condition of the land before any resource activities occurred.</p>	<ul style="list-style-type: none"> (a) Prior to disturbance (b) – (e) Within six months of completing all post-restoration works (f) and (g) Within 3 months of final restoration works.

Condition number	Condition	Timing for condition
	<p><i>'post-reinstatement' - following the completion of the resource activity, being the return of the soil to its previous profile, topography and drainage.</i></p> <p><i>'post-restoration' - this is the point at which the ground cover has been established and ponding, erosion, subsidence, etc has been dealt with (being a longer process than the reinstatement phase).</i></p>	
7.	<p>(a) All complaints received, and resulting actions taken, about the impact of the approved resource activity on the strategic cropping area must be recorded. The record must include:</p> <ul style="list-style-type: none"> (i) name, address and contact number of the complainant (ii) time and date of complaint (iii) reasons for the complaint (iv) investigations undertaken (v) conclusions formed (vi) actions taken to resolve the complaint (vii) any abatement measures implemented (viii) person responsible for resolving the complaint. <p>(b) The records of any complaints received and recorded in accordance with this condition must be provided to the chief executive at RPIAct@dsdilgp.qld.gov.au.</p> <p><i>Note: The record of complaint provided to the chief executive must state the application reference number, being RPI21/001.</i></p>	<p>(a) At all times.</p> <p>(b) Within 60 business days of receipt of a complaint.</p>
8.	A full copy of the regional interests development approval must be held on-site and available to any person(s) contracted to undertake the approved resource activity throughout the construction, operation and restoration stages.	At all times

General Advice

It is the applicant's responsibility to ensure all relevant approvals and licenses are obtained from the applicable Local, State, and/or Federal Authorities prior to works commencing on site.

Attachment 1 - Approved plans and documents



ALLIUM DOES NOT WARRANT THE ACCURACY OR COMPLETENESS OF INFORMATION DISPLAYED IN THIS MAP AND ANY PERSON USING IT DOES SO AT THEIR OWN RISK. ALLIUM SHALL BEAR NO RESPONSIBILITY OR LIABILITY FOR ANY ERRORS, OMISSIONS, OR INACCURACIES IN THE INFORMATION.

Datasource:
 1. Base Imagery, Infrastructure, Townships, Areas © EMA 2016-2019
 2. SPP Imagery © DIRM, 04/2018

- LEGEND**
- Project Site
 - Cadastral Boundary
 - Lot 5 on SP190749 not subject to RIDA application
 - Proposed Activity Footprint
 - Easement
 - Public Road
 - Existing Railway

- SCL Assessment Area**
- SCL Verified (Assessed Area)
 - Non-SCL (Assessed Area)

PLANS AND DOCUMENTS
 referred to in the RIDA

Queensland Government

RIDA ref: RP1121/001

Date: 18 October 2021

Figure 3
Strategic Cropping Land

RIDA Application
Saraji East Mining Lease Project

Scale: 1:32,500 (when printed at A4)

Projection: Map Grid of Australia - Zone 55 (GDA94)

DATE: 13/07/2021 VERSION: 2