

# REGIONAL INTERESTS DEVELOPMENT APPROVAL (RIDA) -

## RPI21/030 Santos – ZMT, Maya 2 and Wackett

(Given under section 53 of the *Regional Planning Interests Act 2014*)

**Date: 8 July 2022**

### Description of the land

Real property description: Lot 1 SP133822 and Lot 1 SP209773

Local Government Area: Bulloo Shire Council

### Approved resource activities

The approved resource activities are set out in Table 1 below.

Definitions of the approved resource activities are provided in Table 2 below.

This development approval authorises impacts on the Channel Country Strategic Environmental Area by the approved resource activities.

**Table 1: Approved resource activities: Santos – ZMT, Maya 2 and Wackett**

Area of regional interest	Location	Resource activity	Area of disturbance (hectares)
Channel Country Strategic Environmental Area (SEA)	Lot 1 SP209773	<b>ZMT</b>	20.4
		Four conventional oil wells (Zeus13,14 and 15 and Minos 4)	
		Access tracks	
		Four borrow pits	
	Lot 1 SP133822	Four above ground gas flowlines	13.3
		<b>Maya 2</b>	
		Buried gas flowline	
		<b>Wackett</b>	
	Wackett South 2 buried flowline	9.6	
	Wackett 14 redirection buried flowline		
<b>Total disturbance area</b>			<b>43.3 ha</b>

**Table 2: Definitions of approved resource activities**

<b>Resource activity</b>	<b>Definition</b>
Oil wells and lease area	<ul style="list-style-type: none"> <li>• Four conventional oil wells (Zeus 13, 14 and 15, and Minos 4)</li> <li>• Oil well and associated well lease to accommodate modular drilling and ancillary equipment, including a derrick, power generators, pipe handling equipment, tanks, chemical injection skid, drilling sumps and associated stockpile, flares and office areas.</li> </ul>
Above ground gas flowlines	<ul style="list-style-type: none"> <li>• Four above ground 73mm diameter External Upset End gas flowlines totalling approx. 2 km raised 150 mm above ground level within a right of way of approx. 15 m</li> </ul>
Buried gas flowlines	<ul style="list-style-type: none"> <li>• Maya 2 buried gas flowline totalling approx. 7 km</li> <li>• Wackett South 2 buried gas flowline and Wackett 14 buried redirection gas flowline totalling approx.4 km</li> <li>• Buried gas flowlines will consist of a 100mm diameter steel pipe, buried to a depth below 750 mm, with an average right-of-way width of 19 m</li> </ul>
Access Tracks	<ul style="list-style-type: none"> <li>• 3.8 km of access tracks approx. 14 m wide, with roadway graded and capped with clay or similar locally available material, and designed to convey natural surface water flows</li> <li>• Designed to convey natural surface water flows consistent with the existing hydrology and will not be accessed during prolonged wet weather.</li> </ul>
Borrow Pits	<ul style="list-style-type: none"> <li>• Four borrow pits to be used as a source of material for the construction of new infrastructure and ongoing maintenance of the well lease and access tracks</li> <li>• The side batters of the borrow pits will be maintained at a slope of approximately 6:1 (3:1 maximum) and the batters of the entrance/exit will be maintained at a slope of approximately 7:1.</li> </ul>

## Regional interests conditions

A person who is the holder of, or is acting under, this RIDA must not contravene a condition of this approval.

Condition number	Condition	Timing for condition
1.	Carry out the approved resource activities and disturbance of land in the Channel Country Strategic Environmental Area generally in accordance with: <ul style="list-style-type: none"> <li>(a) the resource activities identified in Table 1: Approved resource activities</li> <li>(b) the resource activities defined in Table 2: Definitions of resource activities</li> <li>(c) the stamped approved plans:               <ul style="list-style-type: none"> <li>(i) Figure 1: PL 301 ZMT Development Proposed Infrastructure and Construction Disturbance Zone, File No. ENVIR 956b.WOR_Rev 2 prepared by Santos Queensland, dated 19/04/2022 (<b>Attachment 1</b>)</li> <li>(ii) Figure 1: PLA 1047/PLA 1107/ATP1189 Maya Development Proposed Infrastructure and Construction Disturbance Zone, File No. ENVIR 958b.WOR Rev 2 prepared by Santos Queensland, dated 19/04/2022 (<b>Attachment 1</b>)</li> <li>(iii) Figure 3: PPL 2050 Wackett Development Proposed Infrastructure and Construction Disturbance Zone, File No. ENVIR 957b.WOR Rev 2 prepared by Santos Queensland, dated 19/04/2022 (<b>Attachment 1</b>).</li> </ul> </li> </ul>	At all times.
2.	No construction activities are to be undertaken: <ul style="list-style-type: none"> <li>(a) when surface water is present</li> <li>(b) during a flood event/inundation period.</li> </ul>	As indicated.
3.	Implement measures to minimise the diversion of overland flow during construction, operation and decommissioning of the resource activity.	At all times.
4.	Develop and implement erosion and sediment controls which: <ul style="list-style-type: none"> <li>(a) allows stormwater to pass through or around the site in a controlled manner and at non-erosive flow velocities</li> <li>(b) minimise soil erosion resulting from wind, rain and flowing water</li> <li>(c) minimise the duration that disturbed soils are exposed to the erosive forces of wind, rain and flowing water</li> <li>(d) minimise work-related soil erosion and sediment runoff</li> <li>(e) minimise negative impacts to land adjacent to the resource activity.</li> </ul>	At all times.
5.	Contaminants from the resource activities must not be directly or indirectly released to a watercourse / wetland /	At all times.

Condition number	Condition	Timing for condition
	<p>drainage feature or to the bed or banks of a watercourse / wetland / drainage feature or to groundwater.</p> <p><i>Note: Contaminants mean waste contaminants as defined in Schedule 9 of the Environmental Protection Regulation 2008.</i></p>	
6.	Construction and abandonment of petroleum wells to be in accordance with the Department of Resources Code of Practice 'For the construction and abandonment of coal seam gas and petroleum wells in Queensland, Petroleum and Gas Inspectorate.'	At all times during construction and abandonment.
7.	Restore disturbance areas to a pre-disturbance condition.	Within twelve months of completion of resource activity.
8.	<p>Retain records of the pre-disturbance, post-reinstatement and post-restoration condition of disturbance areas and provide these to the chief executive (<a href="mailto:RPIAct@dasilgp.qld.gov.au">RPIAct@dasilgp.qld.gov.au</a> application reference number RPI21/030), demonstrating that the impacted land within the Channel Country Strategic Environmental Area has been returned to its pre-disturbance condition. Such records must include:</p> <ul style="list-style-type: none"> <li>(a) photographs of the pre-disturbance site conditions</li> <li>(b) photographs of the post-reinstatement site conditions</li> <li>(c) photographs of the post-restoration site conditions</li> <li>(d) evidence with the records (date and GPS stamped) required by parts (a) to (c) of this condition.</li> </ul> <p><i>Note:</i></p> <p><i>'disturbance' - means any impact to the landscape, vegetation, air quality, hydrology, habitat, or water quality that has been directly or indirectly caused by human activity associated with the resource activity.</i></p> <p><i>'pre-disturbance' - the condition of the land before any resource activities occurred.</i></p> <p><i>'post-reinstatement' - following the completion of the resource activity, being the return of the soil to its previous profile, topography and drainage</i></p> <p><i>'post-restoration' - this is the point at which the ground cover has been established and ponding, erosion, subsidence, etc has been dealt with (being a longer process than the reinstatement phase).</i></p>	Within three months of completing all post-restoration works.
9.	(a) All complaints received, and resulting actions taken, about the impact of the approved resource activities on the environmental attributes in the Channel Country Strategic Environmental Area must be recorded. The	(a) At all times.

Condition number	Condition	Timing for condition
	<p>record must include:</p> <ul style="list-style-type: none"> <li>(i) name, address and contact number of the complainant</li> <li>(ii) time and date of complaint</li> <li>(iii) reasons for the complaint</li> <li>(iv) investigations undertaken</li> <li>(v) conclusions formed</li> <li>(vi) actions taken to resolve the complaint</li> <li>(vii) any abatement measures implemented</li> <li>(viii) person responsible for resolving the complaint.</li> </ul> <p>(b) Provide records of any complaints received and recorded in accordance with this condition to the chief executive at <a href="mailto:RPIAct@dsdilgp.qld.gov.au">RPIAct@dsdilgp.qld.gov.au</a>.</p> <p><i>Note: The record of complaint provided to the chief executive must state the application reference number, being RPI21/030.</i></p>	(b) Within 60 business days of receipt of a complaint.
10.	A full copy of the regional interests development approval must be kept on-site and available to any person(s) contracted to undertake the approved resource activities.	At all times

### General Advice

It is the applicant's responsibility to ensure all relevant approvals and licenses are obtained from the applicable Local, State, and/or Federal Authorities prior to works commencing on site.

# Attachment 1 - Approved plans

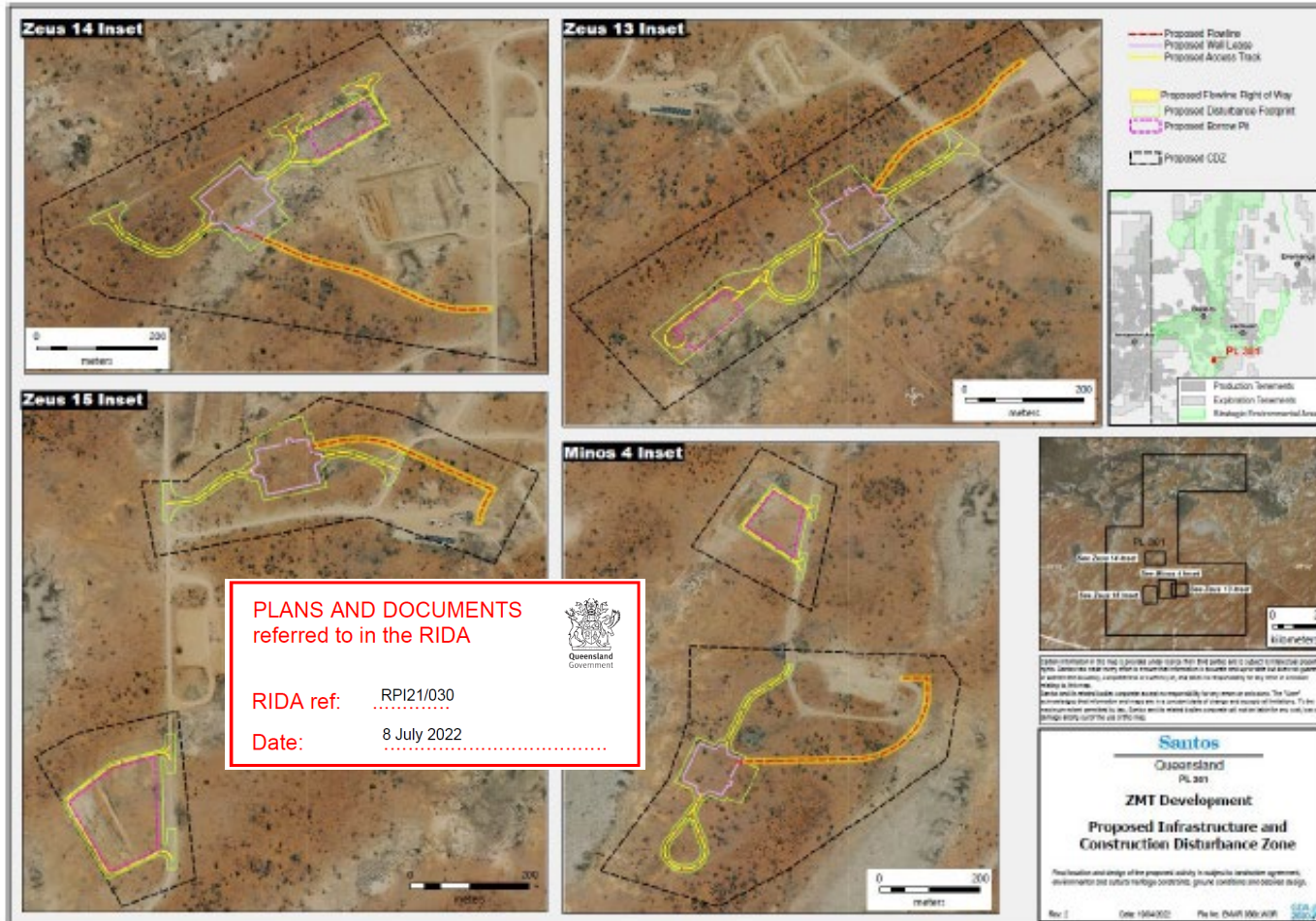


Figure 1 PL 301 ZMT Development Proposed Infrastructure and Construction Disturbance Zone

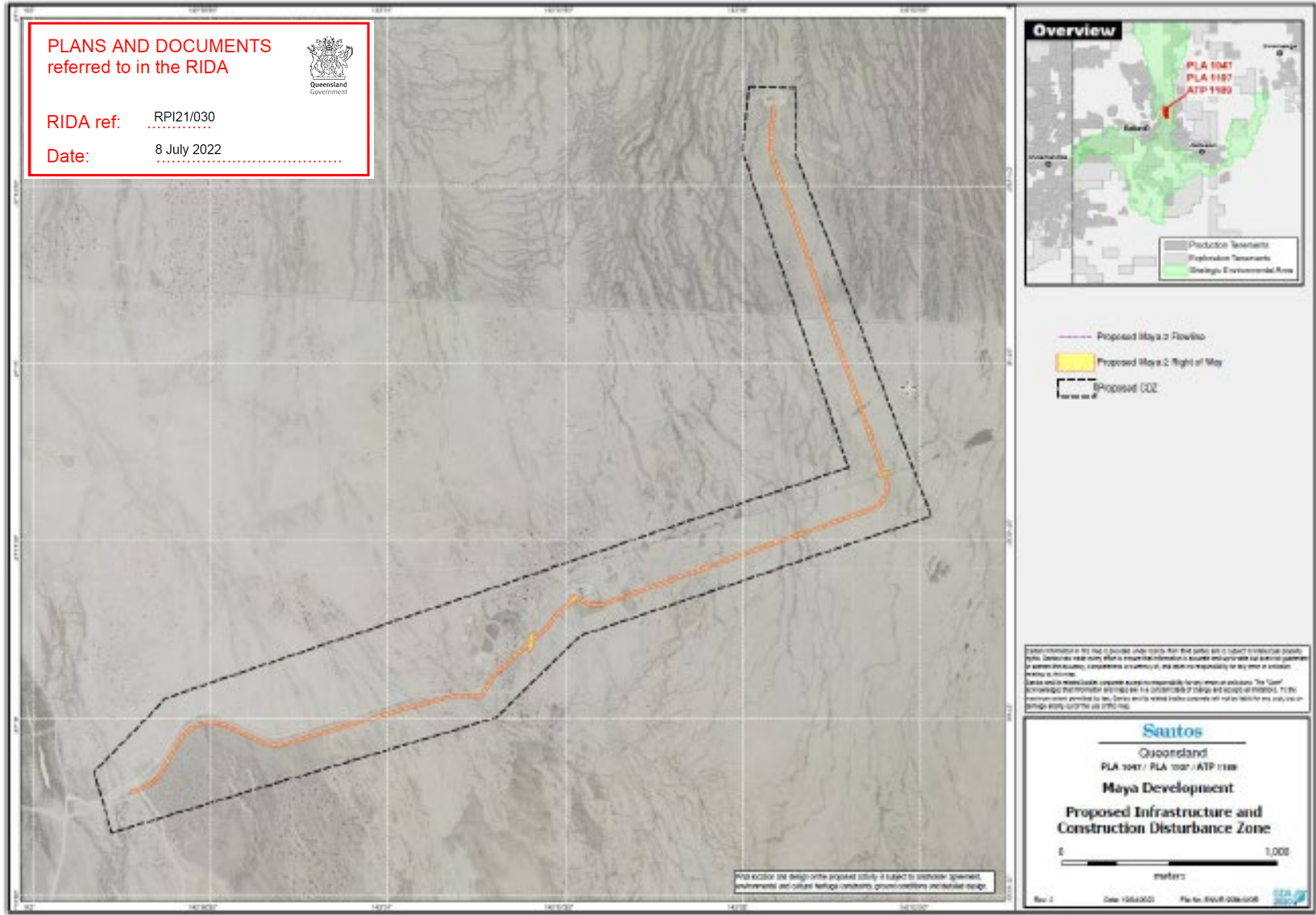


Figure 2 PLA 1047/PLA 1107/ATP1189 Maya Development Proposed Infrastructure and Construction Disturbance Zone

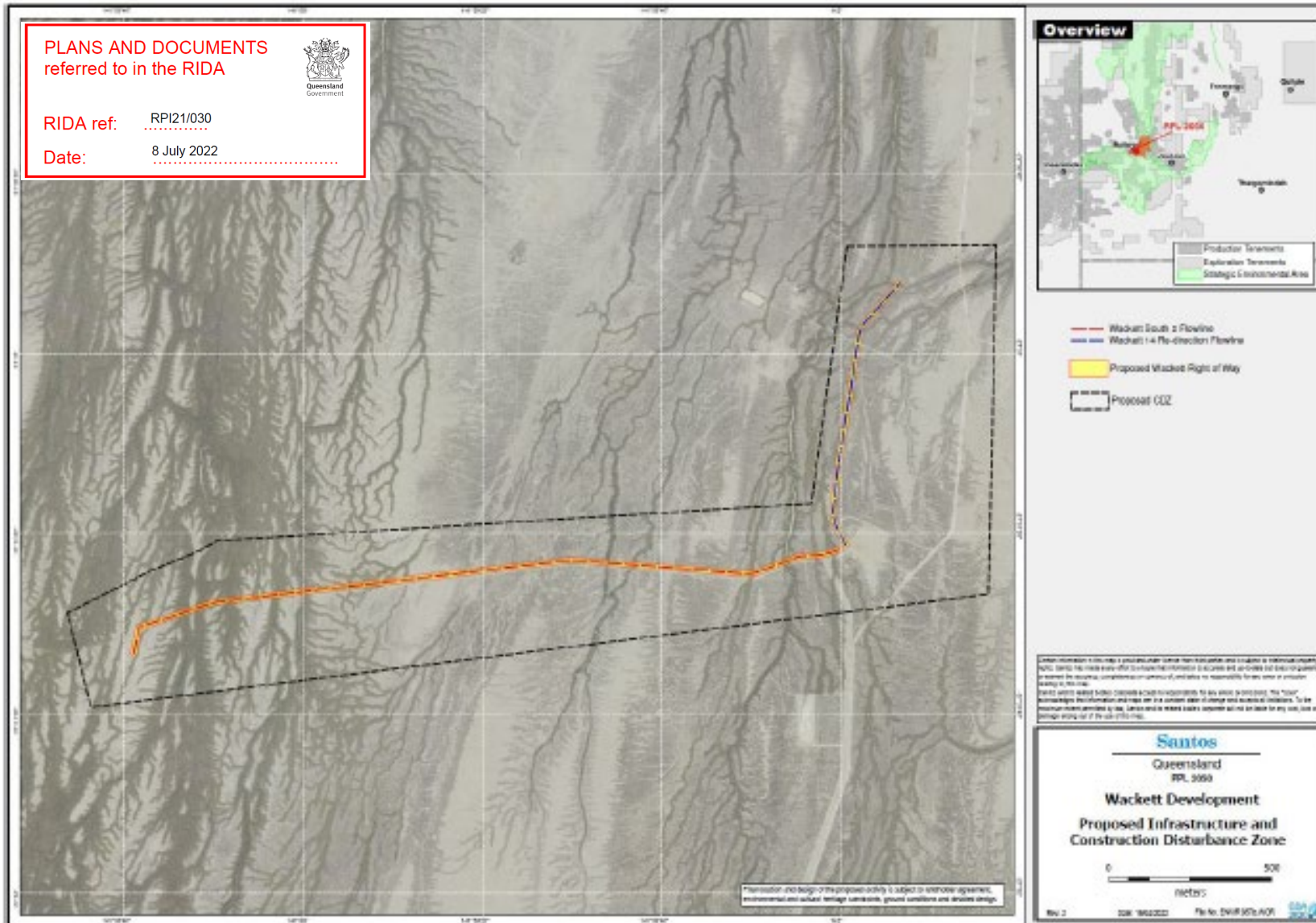


Figure 3 PPL 2050 Wackett Development Proposed Infrastructure and Construction Disturbance Zone