

REGIONAL INTERESTS DEVELOPMENT APPROVAL (RIDA)

RPI22/009 Austral – Mt Walker EPM

(Given under section 53 of the *Regional Planning Interests Act 2014*)

Date: 16 May 2023

Description of the land

Real property description: Lot 70 CH3128, Lot 4 RP50009, Lot 1 RP49462 and Lot 64 CH31240

Area of regional interest: Priority living area

Local Government Area: Ipswich City Council

Approved resource activities

The approved resource activities are set out in Table 1 below.

Definitions of the approved resource activities are provided in Table 2 below.

This development approval authorises impacts on the priority living area by the approved resource activity.

Table 1: Approved resource activity

Area of regional interest	Location	Resource activity
Priority living area	Area A - Lot 70 CH312	Exploration activities
	Area B - Lot 4 RP50009, Lot 1 RP49462, Lot 64 CH31240	

Table 2: Definition of approved resource activity

Resource activity	Definition
Exploration activities	<ul style="list-style-type: none">● Drilling to approximately 25 m depth below natural surface levels, or to the underlying shallow sedimentary unweathered basement. The methods of drilling may comprise any of the following:<ul style="list-style-type: none">○ Rotary Air Blast (RAB) drilling○ Air Core (AC) drilling○ Reverse Circulation (RC) drilling (where lithologies cannot be penetrated by RAB or AC drilling)○ Diamond Core drilling (DD)○ Large diameter drilling to shallow depths (where unmixed samples of thin strata are required, and/or when ceramic laboratory specialty testing is required).● Sample collection from each drill hole and subsequent backfilling of drill holes with returns (i.e., material removed from the same drill hole).● Initial reconnaissance program to collect hand samples of soil/clay/rock on foot, and possible hand-held X-Ray Fluorescence (XRF) and laboratory X-Ray Diffraction (XRD).● Geophysical surveys, typically undertaken using handheld transmitters and receivers. Shallow techniques such as passive seismic ground geophysical survey or Loupe Transient Electro-Magnetics (TEM) ground survey may be used to aid mapping of depth to clay and shale basement, or to differentiate respective layers for drill targeting.

Regional interests conditions

A person who is the holder of, or is acting under, this RIDA must not contravene a condition of this approval.

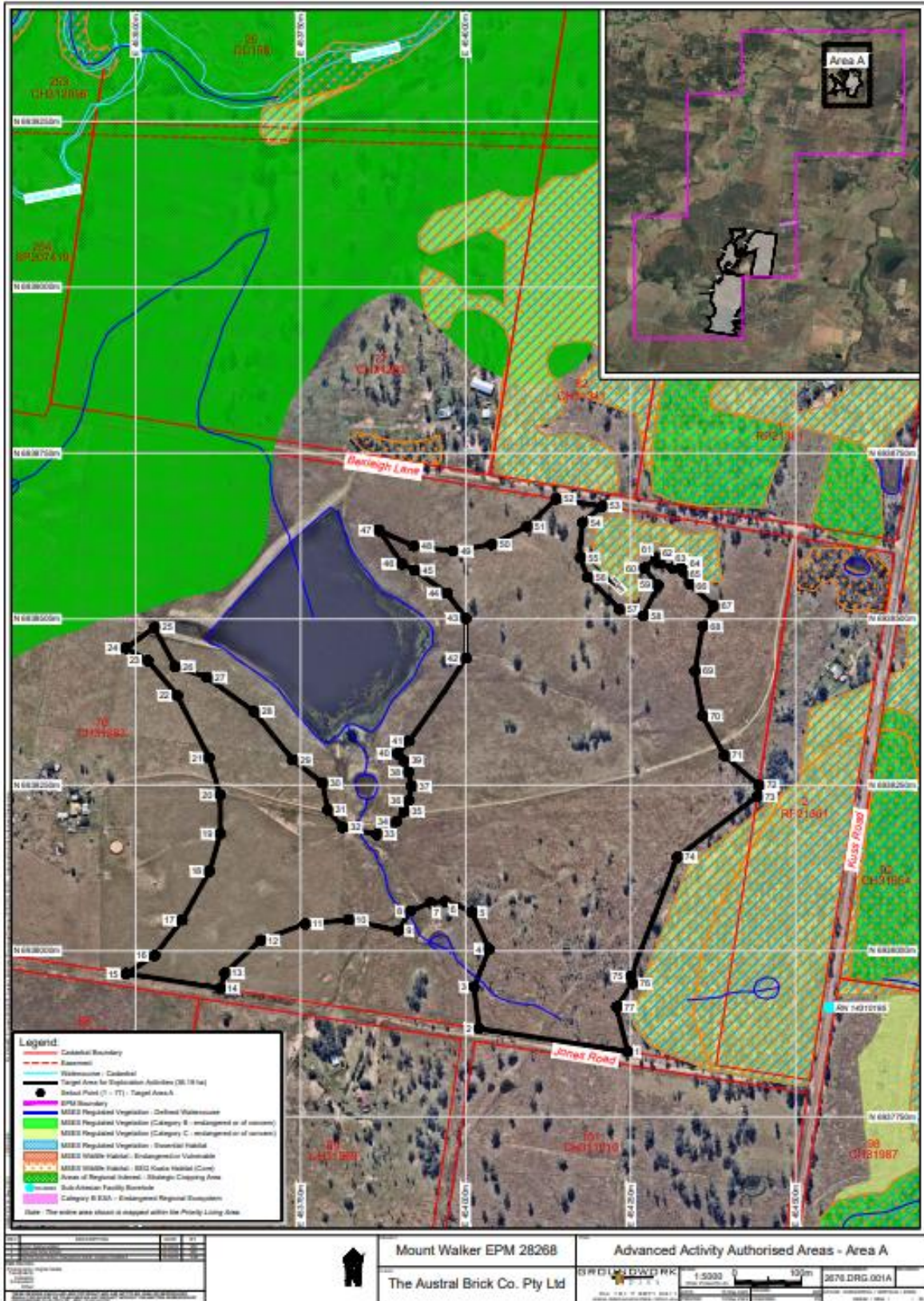
Condition number	Condition	Timing for condition
1.	<p>Carry out the approved resource activity and disturbance of land in the priority living area generally in accordance with:</p> <ul style="list-style-type: none"> (a) the resource activity identified in Table 1: Approved resource activity (b) the resource activity defined in Table 2: Definition of resource activity (c) the locations as shown on approved plans (Attachment 1): <ul style="list-style-type: none"> (i) Advanced Activity Authorised Areas – Area A, Drawing Number 2676.DRG.001A Rev 3, prepared by Groundwork Plus, dated 16/05/23 (ii) Advanced Activity Authorised Areas – Area A, (Setout Points) Drawing Number 2676.DRG.001A Rev 3, prepared by Groundwork Plus, dated 16/05/23 (iii) Advanced Activity Authorised Areas – Area B, Drawing Number 2676.DRG.001C Rev 3, prepared by Groundwork Plus, dated 16/05/23 2023 (iv) Advanced Activity Authorised Areas – Area B, Drawing Number 2676.DRG.001D Rev 3, prepared by Groundwork Plus, dated 16/05/23 2023. 	At all times.
2.	<ul style="list-style-type: none"> (a) All complaints received, and resulting actions taken, about the impact of the approved resource activity must be recorded. The record must include: <ul style="list-style-type: none"> (i) name, address and contact number of the complainant (ii) time and date of complaint (iii) reasons for the complaint (iv) investigations undertaken (v) conclusions formed (vi) actions taken to resolve the complaint (vii) any abatement measures implemented (viii) person responsible for resolving the complaint. (b) Provide records of any complaints received and recorded in accordance with this condition to the chief executive at RPIAct@dcdilqp.qld.gov.au <p><i>Note: The record of complaint provided to the chief executive must state the application reference number, being RPI22/009.</i></p>	<ul style="list-style-type: none"> (a) At all times. (b) Within 60 business days of receipt of a complaint.
3.	A full copy of the regional interests development approval	At all times.

Condition number	Condition	Timing for condition
	must be kept on-site and available to any person(s) contracted to undertake the approved resource activities.	

General Advice

It is the applicant's responsibility to ensure all relevant approvals and licenses are obtained from the applicable Local, State, and/or Federal Authorities prior to works commencing on site.

Attachment 1 - Approved plans






PLANS AND DOCUMENTS
 referred to in the RIDA



RIDA ref: RPI22/009

Date: 16 May 2023

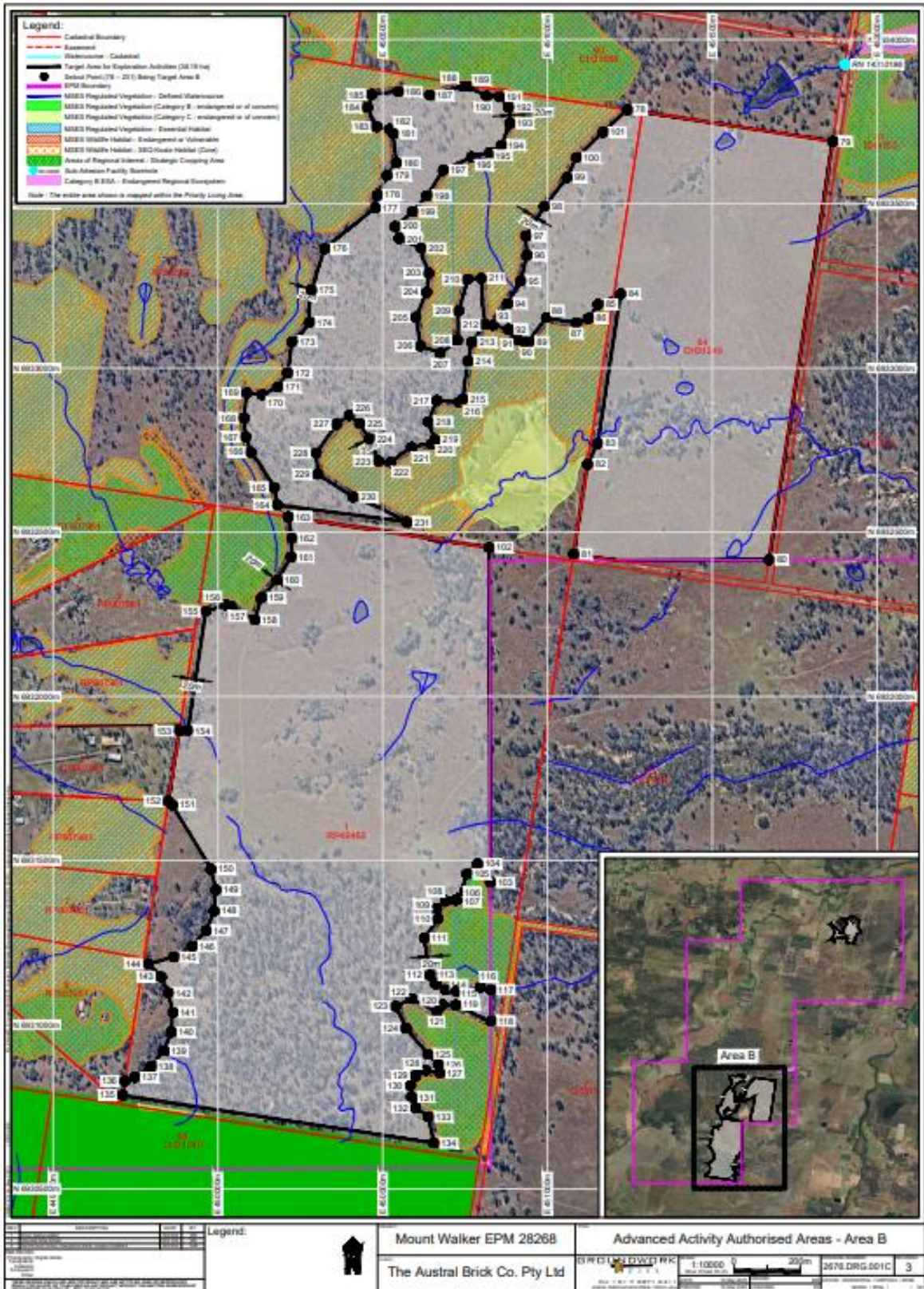
Setout Points Target Area A			Setout Points Target Area A			Setout Points Target Area A		
Point	Latitude	Longitude	Point	Latitude	Longitude	Point	Latitude	Longitude
1	S27° 40' 58.09"	E152° 32' 09.60"	27	S27° 40' 39.68"	E152° 31' 46.42"	53	S27° 40' 31.38"	E152° 32' 08.30"
2	S27° 40' 56.93"	E152° 32' 01.40"	28	S27° 40' 41.38"	E152° 31' 49.02"	54	S27° 40' 32.17"	E152° 32' 07.23"
3	S27° 40' 54.89"	E152° 32' 01.13"	29	S27° 40' 43.73"	E152° 31' 51.14"	55	S27° 40' 33.91"	E152° 32' 07.09"
4	S27° 40' 53.04"	E152° 32' 01.97"	30	S27° 40' 44.88"	E152° 31' 52.79"	56	S27° 40' 34.85"	E152° 32' 07.50"
5	S27° 40' 51.23"	E152° 32' 01.02"	31	S27° 40' 46.20"	E152° 31' 53.07"	57	S27° 40' 36.44"	E152° 32' 09.26"
6	S27° 40' 50.71"	E152° 31' 59.53"	32	S27° 40' 47.06"	E152° 31' 53.89"	58	S27° 40' 36.75"	E152° 32' 10.56"
7	S27° 40' 50.76"	E152° 31' 58.75"	33	S27° 40' 47.41"	E152° 31' 55.77"	59	S27° 40' 35.27"	E152° 32' 11.40"
8	S27° 40' 51.17"	E152° 31' 57.62"	34	S27° 40' 46.79"	E152° 31' 56.84"	60	S27° 40' 34.41"	E152° 32' 10.63"
9	S27° 40' 52.12"	E152° 31' 56.95"	35	S27° 40' 46.29"	E152° 31' 57.30"	61	S27° 40' 33.91"	E152° 32' 11.28"
10	S27° 40' 51.59"	E152° 31' 54.22"	36	S27° 40' 45.75"	E152° 31' 57.56"	62	S27° 40' 34.18"	E152° 32' 11.48"
11	S27° 40' 51.78"	E152° 31' 51.80"	37	S27° 40' 45.05"	E152° 31' 57.71"	63	S27° 40' 34.42"	E152° 32' 12.19"
12	S27° 40' 52.58"	E152° 31' 49.33"	38	S27° 40' 44.37"	E152° 31' 57.55"	64	S27° 40' 34.44"	E152° 32' 12.66"
13	S27° 40' 54.18"	E152° 31' 47.34"	39	S27° 40' 43.80"	E152° 31' 57.28"	65	S27° 40' 34.62"	E152° 32' 12.62"
14	S27° 40' 54.91"	E152° 31' 47.08"	40	S27° 40' 43.46"	E152° 31' 56.93"	66	S27° 40' 35.22"	E152° 32' 13.16"
15	S27° 40' 54.18"	E152° 31' 41.89"	41	S27° 40' 42.84"	E152° 31' 57.59"	67	S27° 40' 36.29"	E152° 32' 14.47"
16	S27° 40' 53.30"	E152° 31' 43.46"	42	S27° 40' 38.80"	E152° 32' 00.75"	68	S27° 40' 37.26"	E152° 32' 13.85"
17	S27° 40' 51.56"	E152° 31' 45.00"	43	S27° 40' 36.83"	E152° 32' 00.75"	69	S27° 40' 39.46"	E152° 32' 13.42"
18	S27° 40' 49.18"	E152° 31' 46.52"	44	S27° 40' 35.61"	E152° 31' 59.72"	70	S27° 40' 41.66"	E152° 32' 13.82"
19	S27° 40' 47.36"	E152° 31' 47.13"	45	S27° 40' 34.48"	E152° 31' 57.92"	71	S27° 40' 43.60"	E152° 32' 15.02"
20	S27° 40' 45.45"	E152° 31' 47.13"	46	S27° 40' 34.17"	E152° 31' 57.24"	72	S27° 40' 45.08"	E152° 32' 16.93"
21	S27° 40' 43.63"	E152° 31' 46.51"	47	S27° 40' 32.52"	E152° 31' 55.98"	73	S27° 40' 45.61"	E152° 32' 16.83"
22	S27° 40' 40.57"	E152° 31' 44.78"	48	S27° 40' 33.30"	E152° 31' 57.89"	74	S27° 40' 48.59"	E152° 32' 12.39"
23	S27° 40' 38.85"	E152° 31' 43.15"	49	S27° 40' 33.55"	E152° 32' 00.05"	75	S27° 40' 54.39"	E152° 32' 09.61"
24	S27° 40' 38.24"	E152° 31' 41.94"	50	S27° 40' 33.24"	E152° 32' 02.20"	76	S27° 40' 54.77"	E152° 32' 09.89"
25	S27° 40' 37.24"	E152° 31' 43.52"	51	S27° 40' 32.37"	E152° 32' 04.15"	77	S27° 40' 55.90"	E152° 32' 09.01"
26	S27° 40' 39.14"	E152° 31' 44.66"	52	S27° 40' 31.01"	E152° 32' 05.77"			

		Mount Walker EPM 28268 The Austral Brick Co. Pty Ltd	Advanced Activity Authorised Areas - Area A 
		RPI22/009	2675.DRG.001A 3

PLANS AND DOCUMENTS
referred to in the RIDA

RIDA ref: RPI22/009

Date: 16 May 2023



PLANS AND DOCUMENTS
 referred to in the RIDA

RIDA ref: RPI22/009

Date: 16 May 2023



Setout Points Target Area B			Setout Points Target Area B			Setout Points Target Area B			Setout Points Target Area B		
Point	Latitude	Longitude	Point	Latitude	Longitude	Point	Latitude	Longitude	Point	Latitude	Longitude
78	527° 43' 09.72"	E152° 30' 19.39"	118	527° 44' 39.83"	E152° 30' 03.86"	158	527° 44' 00.06"	E152° 29' 37.87"	198	527° 43' 18.14"	E152° 29' 57.13"
79	527° 43' 12.93"	E152° 30' 42.13"	119	527° 44' 38.24"	E152° 29' 59.96"	159	527° 43' 57.86"	E152° 29' 38.61"	199	527° 43' 19.73"	E152° 29' 55.54"
80	527° 43' 54.31"	E152° 30' 34.87"	120	527° 44' 38.20"	E152° 29' 58.50"	160	527° 43' 56.13"	E152° 29' 40.36"	200	527° 43' 21.18"	E152° 29' 53.58"
81	527° 43' 53.66"	E152° 30' 13.23"	121	527° 44' 38.88"	E152° 29' 57.87"	161	527° 43' 53.85"	E152° 29' 41.91"	201	527° 43' 22.38"	E152° 29' 54.04"
82	527° 43' 44.78"	E152° 30' 14.82"	122	527° 44' 37.61"	E152° 29' 55.08"	162	527° 43' 52.00"	E152° 29' 42.03"	202	527° 43' 23.34"	E152° 29' 56.45"
83	527° 43' 42.74"	E152° 30' 15.92"	123	527° 44' 38.34"	E152° 29' 53.33"	163	527° 43' 49.87"	E152° 29' 41.60"	203	527° 43' 25.83"	E152° 29' 57.32"
84	527° 43' 27.94"	E152° 30' 18.57"	124	527° 44' 40.52"	E152° 29' 54.43"	164	527° 43' 48.67"	E152° 29' 40.44"	204	527° 43' 27.70"	E152° 29' 57.06"
85	527° 43' 28.97"	E152° 30' 16.05"	125	527° 44' 43.11"	E152° 29' 56.86"	165	527° 43' 46.96"	E152° 29' 40.09"	205	527° 43' 30.15"	E152° 29' 55.85"
86	527° 43' 30.36"	E152° 30' 14.96"	126	527° 44' 44.13"	E152° 29' 58.02"	166	527° 43' 43.47"	E152° 29' 37.54"	206	527° 43' 33.02"	E152° 30' 01.60"
87	527° 43' 30.75"	E152° 30' 13.64"	127	527° 44' 44.95"	E152° 29' 58.15"	167	527° 43' 41.93"	E152° 29' 36.97"	207	527° 43' 33.73"	E152° 29' 58.54"
88	527° 43' 30.27"	E152° 30' 10.33"	128	527° 44' 44.71"	E152° 29' 56.59"	168	527° 43' 40.08"	E152° 29' 36.78"	208	527° 43' 32.46"	E152° 30' 00.50"
89	527° 43' 32.65"	E152° 30' 08.37"	129	527° 44' 45.23"	E152° 29' 55.49"	169	527° 43' 37.60"	E152° 29' 37.09"	209	527° 43' 29.54"	E152° 30' 00.61"
90	527° 43' 32.36"	E152° 30' 07.85"	130	527° 44' 46.19"	E152° 29' 54.91"	170	527° 43' 37.77"	E152° 29' 38.79"	210	527° 43' 26.45"	E152° 30' 01.60"
91	527° 43' 32.45"	E152° 30' 07.15"	131	527° 44' 47.34"	E152° 29' 55.02"	171	527° 43' 37.04"	E152° 29' 40.52"	211	527° 43' 26.36"	E152° 30' 03.12"
92	527° 43' 31.38"	E152° 30' 06.09"	132	527° 44' 48.39"	E152° 29' 55.48"	172	527° 43' 35.62"	E152° 29' 41.61"	212	527° 43' 30.89"	E152° 30' 03.51"
93	527° 43' 30.98"	E152° 30' 04.40"	133	527° 44' 49.30"	E152° 29' 56.89"	173	527° 43' 32.53"	E152° 29' 42.15"	213	527° 43' 32.68"	E152° 30' 02.04"
94	527° 43' 28.84"	E152° 30' 06.02"	134	527° 44' 51.90"	E152° 29' 57.47"	174	527° 43' 30.61"	E152° 29' 44.08"	214	527° 43' 34.50"	E152° 30' 01.59"
95	527° 43' 26.63"	E152° 30' 07.46"	135	527° 44' 47.03"	E152° 29' 23.01"	175	527° 43' 27.41"	E152° 29' 44.36"	215	527° 43' 38.28"	E152° 30' 00.93"
96	527° 43' 24.10"	E152° 30' 08.18"	136	527° 44' 45.64"	E152° 29' 23.26"	176	527° 43' 23.37"	E152° 29' 45.77"	216	527° 43' 38.61"	E152° 30' 00.56"
97	527° 43' 22.20"	E152° 30' 08.09"	137	527° 44' 45.27"	E152° 29' 24.34"	177	527° 43' 19.32"	E152° 29' 51.40"	217	527° 43' 38.40"	E152° 29' 58.15"
98	527° 43' 19.27"	E152° 30' 10.11"	138	527° 44' 44.19"	E152° 29' 26.19"	178	527° 43' 16.08"	E152° 29' 51.63"	218	527° 43' 40.51"	E152° 29' 57.15"
99	527° 43' 16.41"	E152° 30' 12.66"	139	527° 44' 42.66"	E152° 29' 27.59"	179	527° 43' 16.12"	E152° 29' 52.71"	219	527° 43' 42.33"	E152° 29' 57.89"
100	527° 43' 14.45"	E152° 30' 13.70"	140	527° 44' 40.83"	E152° 29' 28.42"	180	527° 43' 14.88"	E152° 29' 53.75"	220	527° 43' 42.75"	E152° 29' 57.48"
101	527° 43' 11.94"	E152° 30' 16.66"	141	527° 44' 38.87"	E152° 29' 28.60"	181	527° 43' 11.99"	E152° 29' 53.44"	221	527° 43' 43.04"	E152° 29' 55.32"
102	527° 43' 53.00"	E152° 30' 03.86"	142	527° 44' 36.94"	E152° 29' 28.12"	182	527° 43' 11.54"	E152° 29' 53.04"	222	527° 43' 44.51"	E152° 29' 53.01"
103	527° 44' 26.13"	E152° 30' 03.86"	143	527° 44' 35.37"	E152° 29' 27.36"	183	527° 43' 11.31"	E152° 29' 51.60"	223	527° 43' 44.39"	E152° 29' 51.68"
104	527° 44' 24.27"	E152° 30' 02.45"	144	527° 44' 34.04"	E152° 29' 25.95"	184	527° 43' 09.38"	E152° 29' 50.60"	224	527° 43' 42.18"	E152° 29' 50.63"
105	527° 44' 25.30"	E152° 30' 01.24"	145	527° 44' 33.40"	E152° 29' 28.74"	185	527° 43' 08.11"	E152° 29' 51.06"	225	527° 43' 40.67"	E152° 29' 49.56"
106	527° 44' 27.71"	E152° 30' 00.34"	146	527° 44' 32.34"	E152° 29' 30.77"	186	527° 43' 07.84"	E152° 29' 54.02"	226	527° 43' 39.85"	E152° 29' 48.46"
107	527° 44' 27.87"	E152° 30' 00.00"	147	527° 44' 30.77"	E152° 29' 32.33"	187	527° 43' 06.22"	E152° 29' 57.50"	227	527° 43' 40.71"	E152° 29' 47.65"
108	527° 44' 27.92"	E152° 29' 58.89"	148	527° 44' 28.85"	E152° 29' 33.25"	188	527° 43' 07.35"	E152° 30' 01.13"	228	527° 43' 43.55"	E152° 29' 44.75"
109	527° 44' 28.71"	E152° 29' 57.87"	149	527° 44' 26.70"	E152° 29' 33.45"	189	527° 43' 07.35"	E152° 30' 01.72"	229	527° 43' 45.66"	E152° 29' 44.92"
110	527° 44' 29.71"	E152° 29' 58.03"	150	527° 44' 24.72"	E152° 29' 32.96"	190	527° 43' 08.33"	E152° 30' 03.79"	230	527° 43' 47.94"	E152° 29' 48.81"
111	527° 44' 31.63"	E152° 29' 56.51"	151	527° 44' 18.33"	E152° 29' 28.66"	191	527° 43' 08.36"	E152° 30' 05.19"	231	527° 43' 50.44"	E152° 29' 54.75"
112	527° 44' 35.29"	E152° 29' 57.10"	152	527° 44' 17.96"	E152° 29' 28.22"	192	527° 43' 09.42"	E152° 30' 06.23"			
113	527° 44' 36.18"	E152° 29' 57.75"	153	527° 44' 11.00"	E152° 29' 29.47"	193	527° 43' 11.04"	E152° 30' 06.36"			
114	527° 44' 36.75"	E152° 29' 58.87"	154	527° 44' 10.98"	E152° 29' 30.37"	194	527° 43' 13.18"	E152° 30' 05.41"			
115	527° 44' 36.87"	E152° 30' 00.01"	155	527° 43' 59.17"	E152° 29' 32.47"	195	527° 43' 13.90"	E152° 30' 04.13"			
116	527° 44' 36.51"	E152° 30' 02.68"	156	527° 43' 58.50"	E152° 29' 34.64"	196	527° 43' 14.33"	E152° 30' 02.10"			
117	527° 44' 36.74"	E152° 30' 03.86"	157	527° 43' 58.60"	E152° 29' 35.24"	197	527° 43' 15.63"	E152° 29' 58.95"			

<p>Legend:</p> 	<p>Mount Walker EPM 28268</p> <p>The Austral Brick Co. Pty Ltd</p>	<p>Advanced Activity Authorised Areas - Area B</p> 	<p>2676.DRGL.001D</p> <p>3</p>
--	--	--	--------------------------------

PLANS AND DOCUMENTS referred to in the RIDA



RIDA ref: RPI22/009

Date: 16 May 2023