



Queensland Government

Department of Environment and Science

Environmental Reports

Matters of State Environmental Significance

For the selected area of interest
epm: 27951

Environmental Reports - General Information

The Environmental Reports portal provides for the assessment of selected matters of interest relevant to a user specified location, or area of interest (AOI). All area and derivative figures are relevant to the extent of matters of interest contained within the AOI unless otherwise stated. Please note, if a user selects an AOI via the "central coordinates" option, the resulting assessment area encompasses an area extending for a 2km radius from the point of interest.

All area and area derived figures included in this report have been calculated via reprojecting relevant spatial features to Albers equal-area conic projection (central meridian = 146, datum Geocentric Datum of Australia 1994). As a result, area figures may differ slightly if calculated for the same features using a different co-ordinate system.

Figures in tables may be affected by rounding.

The matters of interest reported on in this document are based upon available state mapped datasets. Where the report indicates that a matter of interest is not present within the AOI (e.g. where area related calculations are equal to zero, or no values are listed), this may be due either to the fact that state mapping has not been undertaken for the AOI, that state mapping is incomplete for the AOI, or that no values have been identified within the site.

The information presented in this report should be considered as a guide only and field survey may be required to validate values on the ground.

Please direct queries about these reports to: Planning.Support@des.qld.gov.au

Disclaimer

Whilst every care is taken to ensure the accuracy of the information provided in this report, the Queensland Government makes no representations or warranties about its accuracy, reliability, completeness, or suitability, for any particular purpose and disclaims all responsibility and all liability (including without limitation, liability in negligence) for all expenses, losses, damages (including indirect or consequential damage) and costs which the user may incur as a consequence of the information being inaccurate or incomplete in any way and for any reason.



Table of Contents

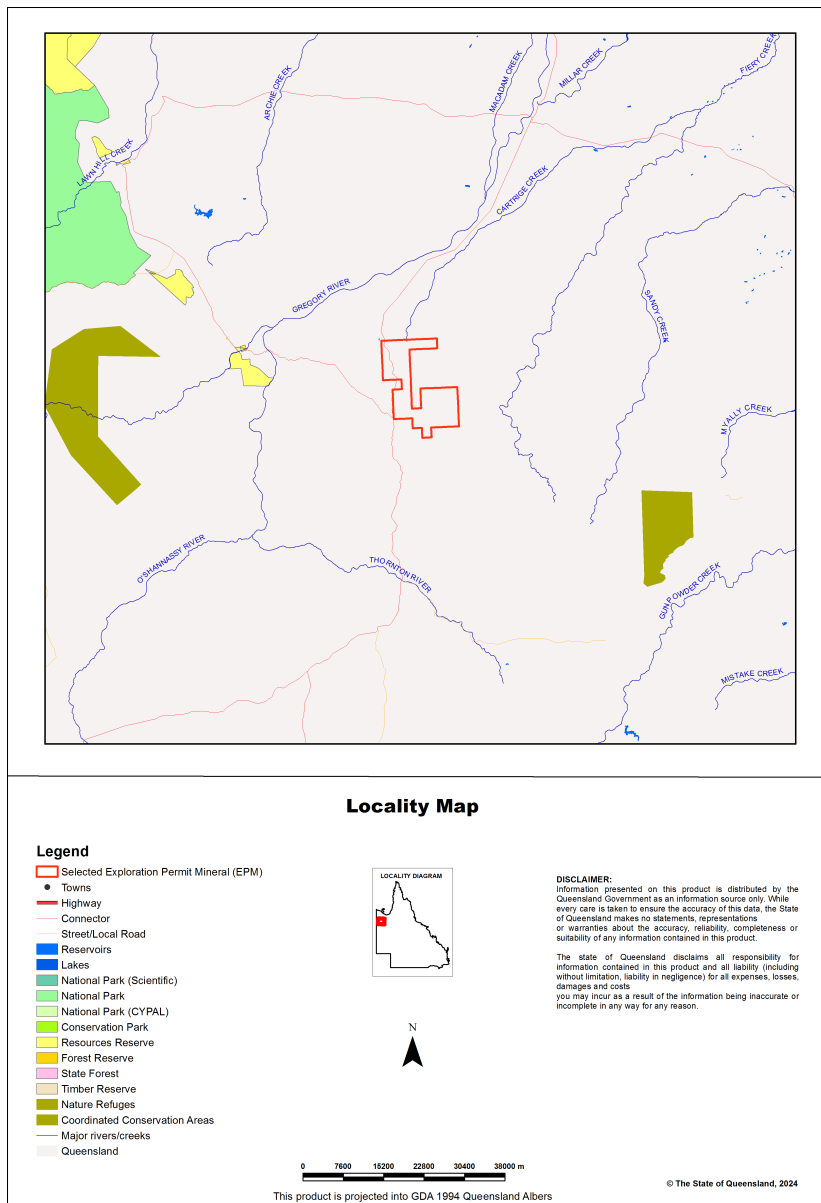
Assessment Area Details	4
Matters of State Environmental Significance (MSES)	5
MSES Categories	5
MSES Values Present	6
Additional Information with Respect to MSES Values Present	7
MSES - State Conservation Areas	7
MSES - Wetlands and Waterways	7
MSES - Species	7
MSES - Regulated Vegetation	9
Map 1 - MSES - State Conservation Areas	11
Map 2 - MSES - Wetlands and Waterways	12
Map 3a - MSES - Species - Threatened (endangered or vulnerable) wildlife and special least concern animals	13
Map 3b - MSES - Species - Koala habitat area (SEQ)	14
Map 3c - MSES - Wildlife habitat (sea turtle nesting areas)	15
Map 4 - MSES - Regulated Vegetation	16
Map 5 - MSES - Offset Areas	17
Appendices	18
Appendix 1 - Matters of State Environmental Significance (MSES) methodology	18
Appendix 2 - Source Data	19
Appendix 3 - Acronyms and Abbreviations	20

Assessment Area Details

The following table provides an overview of the area of interest (AOI) with respect to selected topographic and environmental values.

Table 1: Summary table, details for AOI epm: 27951

Size (ha)	13,266.04
Local Government(s)	Mount Isa City
Bioregion(s)	Northwest Highlands
Subregion(s)	Mount Isa Inlier
Catchment(s)	Leichhardt, Nicholson



Matters of State Environmental Significance (MSES)

MSES Categories

Queensland's State Planning Policy (SPP) includes a biodiversity State interest that states:

'The sustainable, long-term conservation of biodiversity is supported. Significant impacts on matters of national or state environmental significance are avoided, or where this cannot be reasonably achieved; impacts are minimised and residual impacts offset.'

The MSES mapping product is a guide to assist planning and development assessment decision-making. Its primary purpose is to support implementation of the SPP biodiversity policy. While it supports the SPP, the mapping does not replace the regulatory mapping or environmental values specifically called up under other laws or regulations. Similarly, the SPP biodiversity policy does not override or replace specific requirements of other Acts or regulations.

The SPP defines matters of state environmental significance as:

- Protected areas (including all classes of protected area except coordinated conservation areas) under the *Nature Conservation Act 1992* ;
- Marine parks and land within a 'marine national park', 'conservation park', 'scientific research', 'preservation' or 'buffer' zone under the *Marine Parks Act 2004* ;
- Areas within declared fish habitat areas that are management A areas or management B areas under the Fisheries Regulation 2008;
- Threatened wildlife under the *Nature Conservation Act 1992* and special least concern animals under the Nature Conservation (Wildlife) Regulation 2006;
- Regulated vegetation under the *Vegetation Management Act 1999* that is:
 - Category B areas on the regulated vegetation management map, that are 'endangered' or 'of concern' regional ecosystems;
 - Category C areas on the regulated vegetation management map that are 'endangered' or 'of concern' regional ecosystems;
 - Category R areas on the regulated vegetation management map;
 - Regional ecosystems that intersect with watercourses identified on the vegetation management watercourse and drainage feature map;
 - Regional ecosystems that intersect with wetlands identified on the vegetation management wetlands map;
- Strategic Environmental Areas under the *Regional Planning Interests Act 2014* ;
- Wetlands in a wetland protection area of wetlands of high ecological significance shown on the Map of Queensland Wetland Environmental Values under the Environment Protection Regulation 2019;
- Wetlands and watercourses in high ecological value waters defined in the Environmental Protection (Water) Policy 2009, schedule 2;
- Legally secured offset areas.

MSES Values Present

The MSES values that are present in the area of interest are summarised in the table below:

Table 2: Summary of MSES present within the AOI

1a Protected Areas- estates	0.0 ha	0.0 %
1b Protected Areas- nature refuges	0.0 ha	0.0 %
1c Protected Areas- special wildlife reserves	0.0 ha	0.0 %
2 State Marine Parks- highly protected zones	0.0 ha	0.0 %
3 Fish habitat areas (A and B areas)	0.0 ha	0.0 %
4 Strategic Environmental Areas (SEA)	0.0 ha	0.0 %
5 High Ecological Significance wetlands on the map of Referable Wetlands	0.0 ha	0.0 %
6a High Ecological Value (HEV) wetlands	0.0 ha	0.0 %
6b High Ecological Value (HEV) waterways	0.0 km	Not applicable
7a Threatened (endangered or vulnerable) wildlife	0.0 ha	0.0 %
7b Special least concern animals	0.0 ha	0.0 %
7c i Koala habitat area - core (SEQ)	0.0 ha	0.0 %
7c ii Koala habitat area - locally refined (SEQ)	0.0 ha	0.0 %
7d Sea turtle nesting areas	0.0 km	Not applicable
8a Regulated Vegetation - Endangered/Of concern in Category B (remnant)	725.7 ha	5.5%
8b Regulated Vegetation - Endangered/Of concern in Category C (regrowth)	0.0 ha	0.0 %
8c Regulated Vegetation - Category R (GBR riverine regrowth)	0.0 ha	0.0 %
8d Regulated Vegetation - Essential habitat	0.0 ha	0.0 %
8e Regulated Vegetation - intersecting a watercourse	248.1 km	Not applicable
8f Regulated Vegetation - within 100m of a Vegetation Management Wetland	0.0 ha	0.0 %
9a Legally secured offset areas- offset register areas	0.0 ha	0.0 %
9b Legally secured offset areas- vegetation offsets through a Property Map of Assessable Vegetation	0.0 ha	0.0 %

Additional Information with Respect to MSES Values Present

MSES - State Conservation Areas

1a. Protected Areas - estates

(no results)

1b. Protected Areas - nature refuges

(no results)

1c. Protected Areas - special wildlife reserves

(no results)

2. State Marine Parks - highly protected zones

(no results)

3. Fish habitat areas (A and B areas)

(no results)

Refer to **Map 1 - MSES - State Conservation Areas** for an overview of the relevant MSES.

MSES - Wetlands and Waterways

4. Strategic Environmental Areas (SEA)

(no results)

5. High Ecological Significance wetlands on the Map of Queensland Wetland Environmental Values

(no results)

6a. Wetlands in High Ecological Value (HEV) waters

(no results)

6b. Waterways in High Ecological Value (HEV) waters

(no results)

Refer to **Map 2 - MSES - Wetlands and Waterways** for an overview of the relevant MSES.

MSES - Species

7a. Threatened (endangered or vulnerable) wildlife

Not applicable

7b. Special least concern animals

Not applicable

7c i. Koala habitat area - core (SEQ)

Not applicable

7c ii. Koala habitat area - locally refined (SEQ)

Not applicable

7d. Wildlife habitat (sea turtle nesting areas)

Not applicable

Threatened (endangered or vulnerable) wildlife habitat suitability models

Species	Common name	NCA status	Presence
<i>Boronia keysii</i>	Keys boronia	V	None
<i>Calyptorhynchus lathami</i>	Glossy black cockatoo	V	None
<i>Casuarius casuaris johnsonii</i>	Sthn population cassowary	E	None
<i>Crinia tinnula</i>	Wallum froglet	V	None
<i>Denisonia maculata</i>	Ornamental snake	V	None
<i>Euastacus bindal</i>	Mount Elliot crayfish	CR	None
<i>Euastacus binzayedii</i>		CR	None
<i>Euastacus eungella</i>		E	None
<i>Euastacus hystriocosus</i>		E	None
<i>Euastacus jagara</i>	Jagara hairy crayfish	CR	None
<i>Euastacus madae</i>		CR	None
<i>Euastacus monteithorum</i>		E	None
<i>Euastacus robertsi</i>		E	None
<i>Litoria freycineti</i>	Wallum rocketfrog	V	None
<i>Litoria olongburensis</i>	Wallum sedgefrog	V	None
<i>Macadamia integrifolia</i>		V	None
<i>Macadamia ternifolia</i>		V	None
<i>Macadamia tetraphylla</i>	bopple nut	V	None
<i>Melaleuca irbyana</i>	swamp tea-tree	E	None
<i>Petaurus gracilis</i>	Mahogany Glider	E	None
<i>Petrogale coenensis</i>	Cape York rock-wallaby	V	None
<i>Petrogale penicillata</i>	brush-tailed rock-wallaby	V	None
<i>Petrogale persephone</i>	Proserpine rock-wallaby	E	None
<i>Petrogale purpleicollis</i>	purple-necked rock-wallaby	V	None
<i>Petrogale sharmani</i>	Sharmans rock-wallaby	V	None

Species	Common name	NCA status	Presence
<i>Petrogale xanthopus celeris</i>	yellow-footed rock-wallaby (Qld subspecies)	V	None
<i>Pezoporus wallicus wallicus</i>	Eastern ground parrot	V	None
<i>Phascolarctos cinereus</i>	Koala - outside SEQ*	E	None
<i>Taudactylus pleione</i>	Kroombit tinkerfrog	E	None
<i>Xeromys myoides</i>	Water Mouse	V	None

*For koala model, this includes areas outside SEQ. Check 7c SEQ koala habitat for presence/absence.

Threatened (endangered or vulnerable) wildlife species records

(no results)

Special least concern animal species records

(no results)

Shorebird habitat (critically endangered/endangered/vulnerable)

Not applicable

Shorebird habitat (special least concern)

Not applicable

*Nature Conservation Act 1992 (NCA) Status- Endangered (E), Vulnerable (V) or Special Least Concern Animal (SL).
Environment Protection and Biodiversity Conservation Act 1999 (EPBC) status: Critically Endangered (CE) Endangered (E), Vulnerable (V)

Migratory status (M) - China and Australia Migratory Bird Agreement (C), Japan and Australia Migratory Bird Agreement (J), Republic of Korea and Australia Migratory Bird Agreement (R), Bonn Migratory Convention (B), Eastern Flyway (E)

To request a species list for an area, or search for a species profile, access Wildlife Online at:

<https://www.qld.gov.au/environment/plants-animals/species-list/>

Refer to **Map 3a - MSES - Species - Threatened (endangered or vulnerable) wildlife and special least concern animals**, **Map 3b - MSES - Species - Koala habitat area (SEQ)** and **Map 3c - MSES - Wildlife habitat (sea turtle nesting areas)** for an overview of the relevant MSES.

MSES - Regulated Vegetation

For further information relating to regional ecosystems in general, go to:

<https://www.qld.gov.au/environment/plants-animals/plants/ecosystems/>

For a more detailed description of a particular regional ecosystem, access the regional ecosystem search page at:

<https://environment.ehp.qld.gov.au/regional-ecosystems/>

8a. Regulated Vegetation - Endangered/Of concern in Category B (remnant)

Regional ecosystem	Vegetation management polygon	Vegetation management status
1.3.13a/1.3.10/1.3.7b	O-subdom	rem_oc
1.3.13a/1.3.5/1.5.13/1.3.10	O-subdom	rem_oc
1.5.13/1.3.10	O-subdom	rem_oc

8b. Regulated Vegetation - Endangered/Of concern in Category C (regrowth)

Not applicable

8c. Regulated Vegetation - Category R (GBR riverine regrowth)

Not applicable

8d. Regulated Vegetation - Essential habitat

Not applicable

8e. Regulated Vegetation - intersecting a watercourse**

A vegetation management watercourse is mapped as present

8f. Regulated Vegetation - within 100m of a Vegetation Management wetland

Not applicable

Refer to **Map 4 - MSES - Regulated Vegetation** for an overview of the relevant MSES.

MSES - Offsets**9a. Legally secured offset areas - offset register areas**

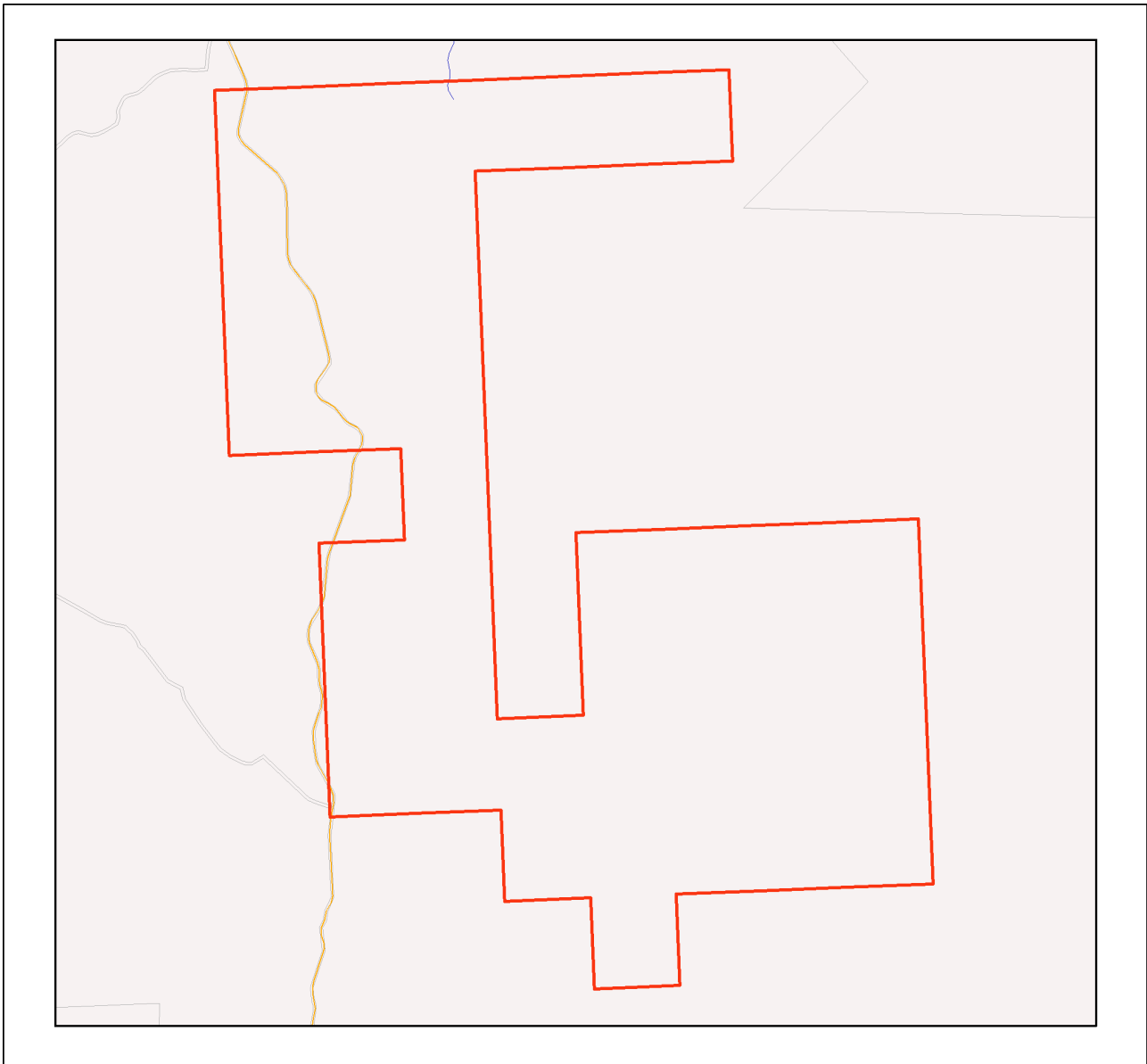
(no results)

9b. Legally secured offset areas - vegetation offsets through a Property Map of Assessable Vegetation

(no results)

Refer to **Map 5 - MSES - Offset Areas** for an overview of the relevant MSES.

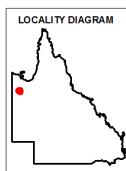
Map 3a - MSES - Species - Threatened (endangered or vulnerable) wildlife and special least concern animals



MSES - Species Threatened (endangered or vulnerable) wildlife and special least concern animals

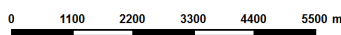
Area of Interest

- Selected Exploration Permit Mineral (EPM)
- Towns
- Freeways/Highways
- Secondary roads
- Major rivers/creeks
- Wildlife habitat (special least concern)
- Wildlife habitat (endangered or vulnerable)



Information presented on this product is distributed by the Queensland Government as an information source only. While every care is taken to ensure the accuracy of this data, the state of Queensland makes no statements, representations or warranties about the accuracy, reliability, completeness or suitability of any information contained in this product.

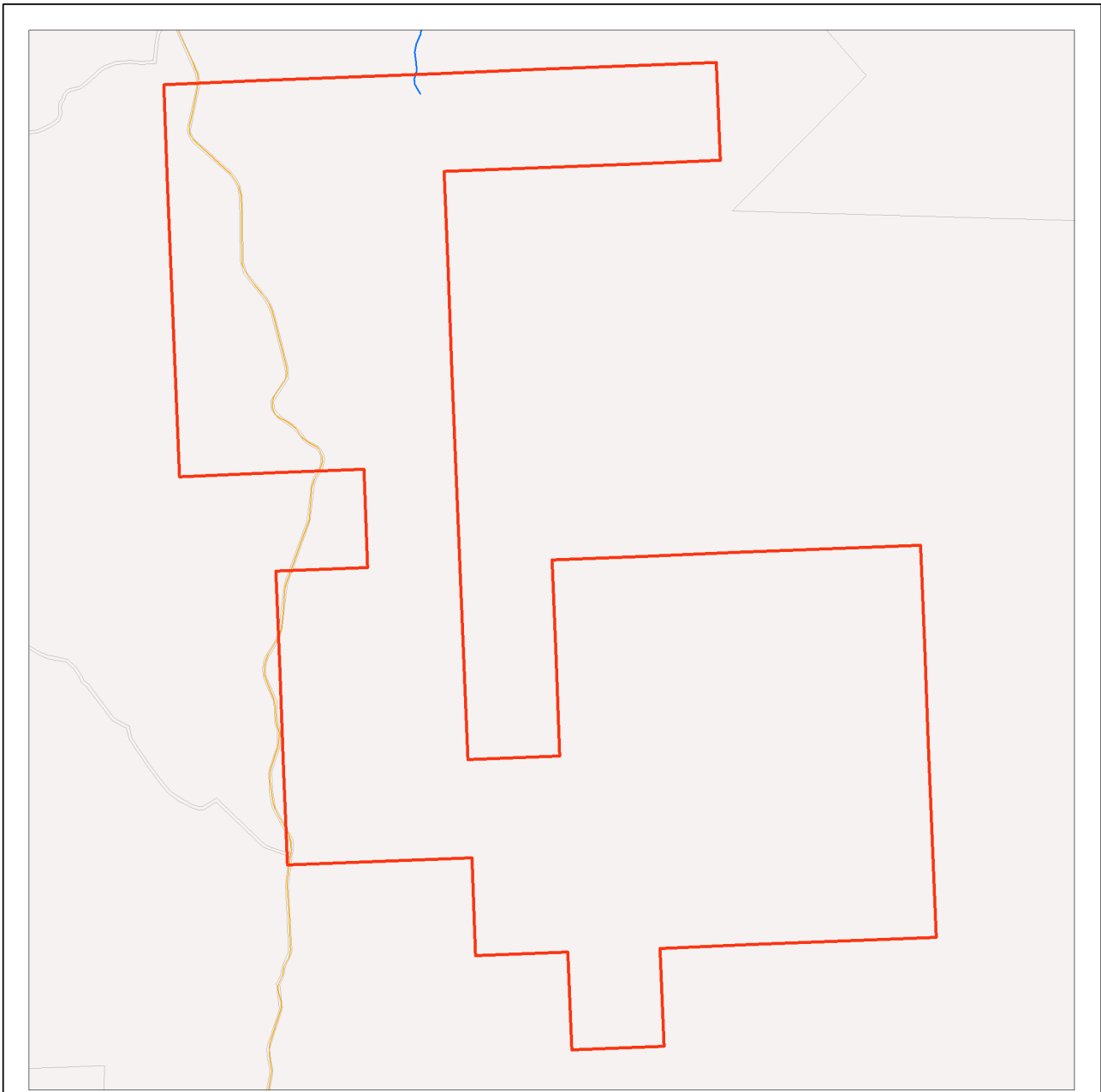
The state of Queensland disclaims all responsibility for information contained in this product and all liability (including without limitation, liability in negligence) for all expenses, losses, damages and costs you may incur as a result of the information being inaccurate or incomplete in any way for any reason.



This product is projected into GDA 1994 Queensland Albers

© The State of Queensland, 2024

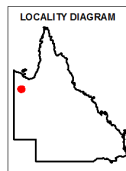
Map 3b - MSES - Species - Koala habitat area (SEQ)



MSES - Species Koala habitat area (SEQ)

Area of Interest

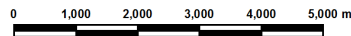
- Selected Exploration Permit Mineral (EPM)
- Towns
- Freeways/Highways
- Secondary roads
- Major rivers/creeks
- Koala habitat area (core)
- Koala habitat area (locally refined)



While every care is taken to ensure the accuracy of this product, the Department of Environment and Science acting on behalf of the State of Queensland makes no representations or warranties about its accuracy, reliability, completeness or suitability for any particular purpose and disclaims all responsibility and all liability (including without limitation, liability in negligence) for all expenses, losses, damages (including indirect or consequential damage) and costs which you might incur as a result of the data being inaccurate or incomplete in any way and for any reason. Due to varying sources of data, spatial locations may not coincide when overlaid.

The represented layers for SEQ 'koala habitat area-core' and 'koala habitat area- locally refined' in MSES are sourced directly from the regulatory mapping under the Nature Conservation (Koala) Conservation Plan 2017. Whilst every effort is made to ensure the information remains current, there may be delays between updating versions. Please refer to the original mapping for the most recent version. See <https://environment.des.qld.gov.au/wildlife/animals/living-with/koalas/mapping>

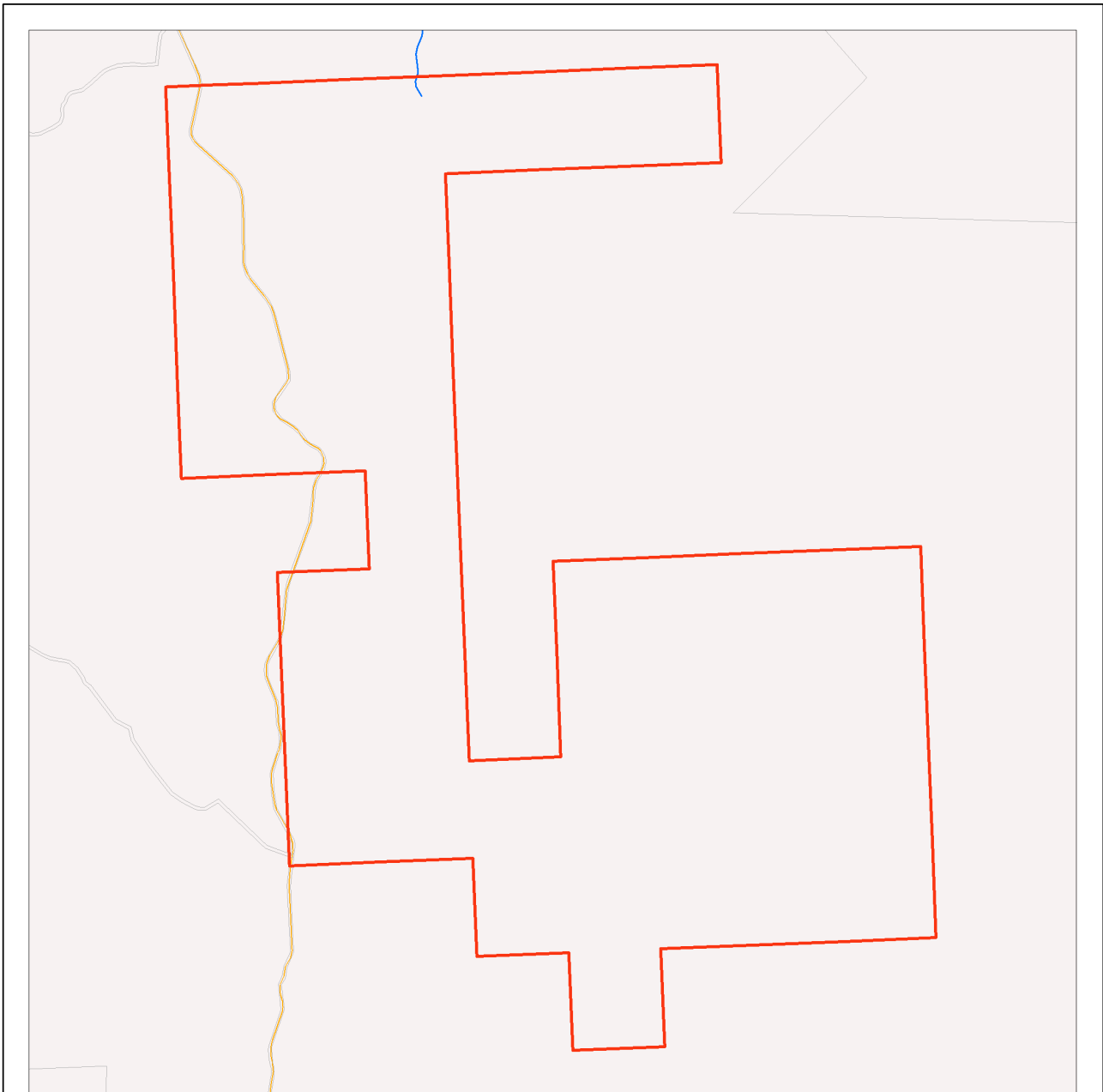
The koala habitat mapping within South East Queensland uses regional ecosystem linework compiled at a scale varying from 1:25,000 to 1:100,000. Linework should be used as a guide only. The positional accuracy of regional ecosystem data mapped at a scale of 1:100,000 is +/- 100 metres.



© The State of Queensland, 2024

This product is projected into GDA 1994 Queensland Albers

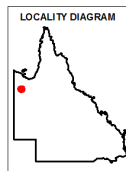
Map 3c - MSES - Wildlife habitat (sea turtle nesting areas)



MSES - Wildlife habitat (sea turtle nesting areas)

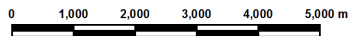
Area of Interest

- Selected Exploration Permit Mineral (EPM)
- Towns
- Freeways/Highways
- Secondary roads
- Major rivers/creeks
- Wildlife habitat (sea turtle nesting areas)

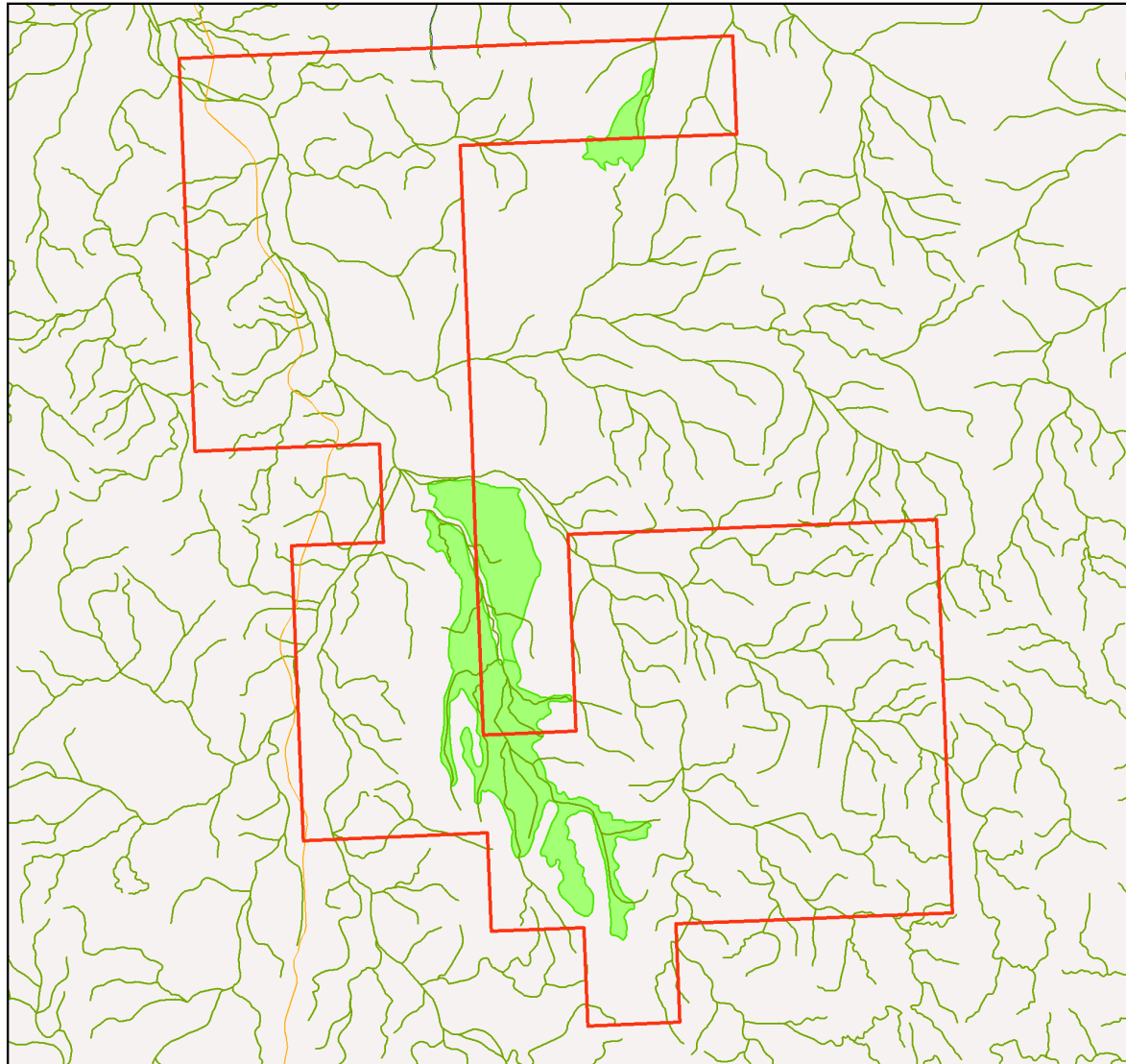


While every care is taken to ensure the accuracy of this product, the Department of Environment and Science acting on behalf of the State of Queensland makes no representations or warranties about its accuracy, reliability, completeness or suitability for any particular purpose and disclaims all responsibility and all liability (including without limitation, liability in negligence) for all expenses, losses, damages (including indirect or consequential damage) and costs which you might incur as a result of the data being inaccurate or incomplete in any way and for any reason. Due to varying sources of data, spatial locations may not coincide when overlaid.

MSES mapping of sea turtle nesting areas identifies beaches where the recorded number of turtle nests are over 1% of the turtle species or genetic stock. The linework is also deliberately extended along nearby rocky coastlines and headlands to recognise that significant numbers of nesting adults and hatchlings can become disoriented by light pollution from development on rocky coastlines and headlands while navigating offshore from nesting beaches.



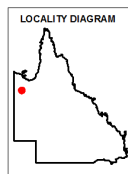
Map 4 - MSES - Regulated Vegetation



MSES - Regulated Vegetation

Area of Interest

- Selected Exploration Permit Mineral (EPM)
- Towns
- Freeways/Highways
- Secondary roads
- Major rivers/creeks
- Regulated vegetation (intersecting a watercourse)
- Regulated vegetation (100m from wetland)
- Regulated vegetation (category B - endangered or of concern)
- Regulated vegetation (category C - endangered or of concern)
- Regulated vegetation (category R - GBR riverine)
- Regulated vegetation (essential habitat)



Information presented on this product is distributed by the Queensland Government as an information source only. While every care is taken to ensure the accuracy of this data, the state of Queensland makes no statements, representations or warranties about the accuracy, reliability, completeness or suitability of any information contained in this product.

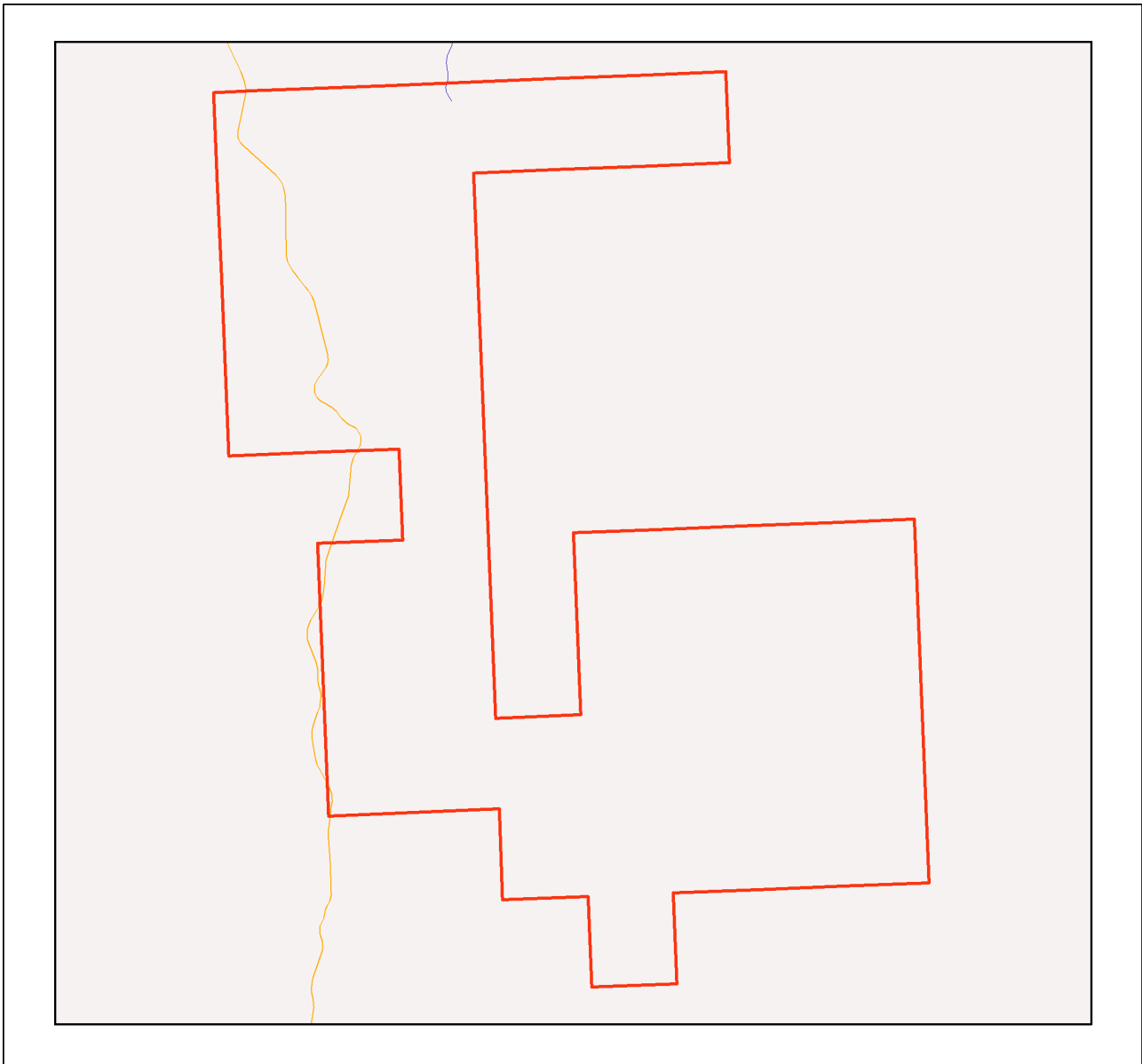
The state of Queensland disclaims all responsibility for information contained in this product and all liability (including without limitation, liability in negligence) for all expenses, losses, damages and costs you may incur as a result of the information being inaccurate or incomplete in any way for any reason.



© The State of Queensland, 2024


This product is projected into GDA 1994 Queensland Albers

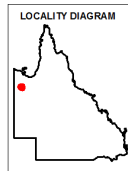
Map 5 - MSES - Offset Areas



MSES - Offsets

Area of Interest

-  Selected Exploration Permit Mineral (EPM)
-  Towns
-  Freeways/Highways
-  Secondary roads
-  Major rivers/creeks
-  Legally secured offset area (offset register)
-  Legally secured offset area (vegetation offsets)



Information presented on this product is distributed by the Queensland Government as an information source only. While every care is taken to ensure the accuracy of this data, the State of Queensland makes no statements, representations or warranties about the accuracy, reliability, completeness or suitability of any information contained in this product.

The state of Queensland disclaims all responsibility for information contained in this product and all liability (including without limitation, liability in negligence) for all expenses, losses, damages and costs you may incur as a result of the information being inaccurate or incomplete in any way for any reason.

© The State of Queensland, 2024

This product is projected into GDA 1994 Queensland Albers

Appendices

Appendix 1 - Matters of State Environmental Significance (MSES) methodology

MSES mapping is a regional-scale representation of the definition for MSES under the State Planning Policy (SPP). The compiled MSES mapping product is a guide to assist planning and development assessment decision-making. Its primary purpose is to support implementation of the SPP biodiversity policy. While it supports the SPP, the mapping does not replace the regulatory mapping or environmental values specifically called up under other laws or regulations. Similarly, the SPP biodiversity policy does not override or replace specific requirements of other Acts or regulations.

The Queensland Government's "Method for mapping - matters of state environmental significance for use in land use planning and development assessment" can be downloaded from:

<http://www.ehp.qld.gov.au/land/natural-resource/method-mapping-mses.html> .

Appendix 2 - Source Data

The datasets listed below are available on request from:

<http://qldspatial.information.qld.gov.au/catalogue/custom/index.page>

- Matters of State environmental significance

Note: MSES mapping is not based on new or unique data. The primary mapping product draws data from a number of underlying environment databases and geo-referenced information sources. MSES mapping is a versioned product that is updated generally on a twice-yearly basis to incorporate the changes to underlying data sources. Several components of MSES mapping made for the current version may differ from the current underlying data sources. To ensure accuracy, or proper representation of MSES values, it is strongly recommended that users refer to the underlying data sources and review the current definition of MSES in the State Planning Policy, before applying the MSES mapping.

Individual MSES layers can be attributed to the following source data available at QSpatial:

MSES layers	current QSpatial data (http://qspatial.information.qld.gov.au)
Protected Areas-Estates, Nature Refuges, Special Wildlife Reserves	- Protected areas of Queensland - Nature Refuges - Queensland - Special Wildlife Reserves- Queensland
Marine Park-Highly Protected Zones	Moreton Bay marine park zoning 2008
Fish Habitat Areas	Queensland fish habitat areas
Strategic Environmental Areas-designated	Regional Planning Interests Act - Strategic Environmental Areas
HES wetlands	Map of Queensland Wetland Environmental Values
Wetlands in HEV waters	HEV waters: - EPP Water intent for waters Source Wetlands: - Queensland Wetland Mapping (Current version 5) Source Watercourses: - Vegetation management watercourse and drainage feature map (1:100000 and 1:250000)
Wildlife habitat (threatened and special least concern)	- WildNet database species records - habitat suitability models (various) - SEQ koala habitat areas under the Koala Conservation Plan 2019 - Sea Turtle Nesting Areas records
VMA regulated regional ecosystems	Vegetation management regional ecosystem and remnant map
VMA Essential Habitat	Vegetation management - essential habitat map
VMA Wetlands	Vegetation management wetlands map
Legally secured offsets	Vegetation Management Act property maps of assessable vegetation. For offset register data-contact DES
Regulated Vegetation Map	Vegetation management - regulated vegetation management map

Appendix 3 - Acronyms and Abbreviations

AOI	- Area of Interest
DES	- Department of Environment and Science
EP Act	- <i>Environmental Protection Act 1994</i>
EPP	- Environmental Protection Policy
GDA94	- Geocentric Datum of Australia 1994
GEM	- General Environmental Matters
GIS	- Geographic Information System
MSES	- Matters of State Environmental Significance
NCA	- <i>Nature Conservation Act 1992</i>
RE	- Regional Ecosystem
SPP	- State Planning Policy
VMA	- <i>Vegetation Management Act 1999</i>