



Queensland
Government

Department of
**Housing, Local Government,
Planning and Public Works**

REGIONAL INTERESTS DEVELOPMENT APPROVAL (RIDA)

RPI24/001: Anglo American – Planet Downs Project

(Given under section 53 of the *Regional Planning Interests Act 2014*)

Date: 5 July 2024

Description of the land

Real property description: Lot 3 SP181805, Lot 2948 SP271811, Lot 9 BK30, Lot 1 BK21, Lot 3 SP194668, Lot 2 CP907594, Lot 5 SP111112, Lot 4 GY805051, Lot 1 GY14

Local Government Area: Burke Shire Council
Carpentaria Shire Council
Mt Isa City Council

Approved resource activities

The approved resource activities are set out in Table 1 below.

Definitions of the approved resource activities are provided in Table 2 below.

This development approval authorises impacts on the Gulf Rivers Strategic Environmental Area (SEA) by the approved resource activities.

Table 1: Approved resource activities

Area of regional interest	Location	Resource activities	Area of disturbance (hectares)
Gulf Rivers SEA	Lot 3 SP181805, Lot 2948 SP271811 Lot 9 BK30, Lot 1 BK21, Lot 3 SP194668, Lot 2 CP907594, Lot 5 SP111112, Lot 4 GY805051, Lot 1 GY14	Exploration activities	0.32
Total disturbance area			0.32 ha

Table 2: Definitions of approved resource activities

Resource activities	Definition
Exploration activities	<p><i>Geomapping rock chip sampling</i></p> <ul style="list-style-type: none"> • Rock chip sampling, small-scale soil sampling, and water bore sampling. • Structural readings or measurements of rocky outcrops using a compass. • If required, maximum of one rock chip sample of approx. one kilogram per site, using handheld tools. <p><i>Soil sampling</i></p> <ul style="list-style-type: none"> • Use of a mechanical auger, with 25 cm diameter holes, approx. 30 to 50 cm deep. • Surface area of approx. 0.05m² per hole. • Approx. 3,000 sampling locations. • Holes backfilled at the completion of the survey. <p><i>Water Bore Sampling</i></p> <ul style="list-style-type: none"> • Sampling involving existing bores. <p><i>2D Seismic Data Acquisition Survey</i></p> <ul style="list-style-type: none"> • Up to nine seismic lines ranging in length from 2 km up to 15 km. • Up to 42,000 temporary node sites. • Holes for the nodes of approx. 20 to 30 cm in diameter and up to 30 cm deep, using handheld tools. • Holes located every 5 m to 20 m along the seismic lines. • Surface area of approx. 0.07 m² per hole. • Holes backfilled at the completion of the survey.

Regional interests conditions

A person who is the holder of, or is acting under, this RIDA must not contravene a condition of this approval.

Condition number	Condition	Timing for condition
1.	Carry out the approved resource activities and disturbance of land in the Gulf Rivers Strategic Environmental Area generally in accordance with: (a) the resource activities identified in Table 1: Approved resource activities (b) the resource activities defined in Table 2: Definitions of approved resource activities (c) Figure 12 – Seismic Survey Area and Land Ownership prepared by Umwelt (Attachment 1).	At all times.
2.	No activities are to be undertaken: (a) during the regional wet season (December to March) (b) in times when there is water present (c) in times of flow.	As indicated.
3.	Implement measures to minimise the diversion of overland flow.	At all times.
4.	Linear infrastructure construction corridors must: (a) maximise co-location (b) be minimised in width to the greatest practicable extent (c) be no greater than 3 metres in total width. <i>Note: Linear infrastructure means infrastructure constructed in a corridor, typically between several metres and several hundred metres wide, such as powerlines, pipelines, train lines, conveyor belts, flowlines, roads and access tracks.</i>	At all times.
5.	Contaminants from the resource activity must not be directly or indirectly released to a watercourse, wetland, drainage feature or to the banks of a watercourse, wetland, drainage feature or to groundwater. <i>Note: Contaminants means water contaminants as defined in Schedule 9 of the Environmental Protection Regulation 2008.</i>	At all times.
6.	The construction or maintenance works for linear infrastructure in a watercourse must not result in: (a) ongoing negative impacts to water quality (b) bank instability.	At all times.
7.	The activities must not have a direct or indirect impact on a wetland of high ecological value, Great Artesian Basin Spring, subterranean cave, Groundwater Dependent Ecosystem (GDE) or wetland.	At all times.

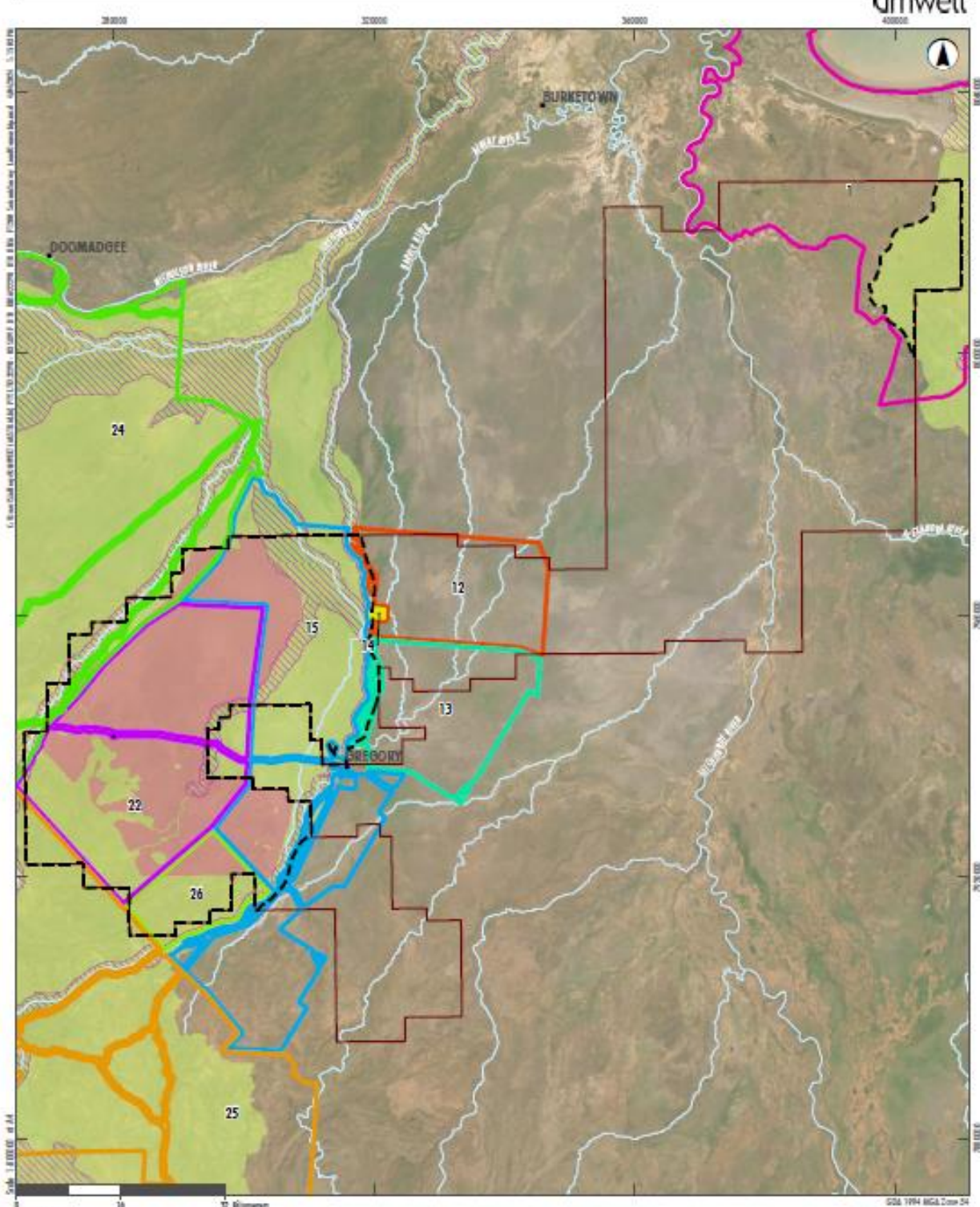
Condition number	Condition	Timing for condition
	<p>Disturbed wildlife corridors that are no longer required for the exploration activity must be rehabilitated within six months of no longer being required.</p> <p><i>Note: Disturbed means any impact to the landscape, vegetation, air quality, hydrology, habitat, or water quality that has been directly or indirectly caused by human activity associated with the resource/ regulated activity.</i></p>	At all times.
8.	No trees with a diameter at breast height greater than 20cm are to be cleared.	At all times.
9.	The construction or maintenance of linear infrastructure in a watercourse must not result in the clearing of riparian vegetation outside of the minimum area practicable to carry out the works.	At all times.
10.	Acid sulfate soils that are exposed or disturbed in any physical way must be treated and managed in accordance with the latest edition of the Queensland Acid Sulfate Soils Technical Manual.	At all times.
11.	<p>Develop and implement erosion and sediment controls in accordance with 'Best Practice Erosion and Sediment Control. International Erosion Control Association (Australasia)' which:</p> <ul style="list-style-type: none"> (a) allows stormwater to pass through or around the site in a controlled manner and at non-erosive flow velocities (b) minimises soil erosion resulting from wind, rain and flowing water (c) minimises the duration that disturbed soils are exposed to the erosive forces of wind, rain and flowing water (d) minimises work-related soil erosion and sediment runoff (e) minimises negative impacts to land adjacent to the resource activities. 	At all times.
12.	<p>At the completion of the resource activities, return disturbance areas to a profile similar to pre-disturbance conditions which achieves stable landforms that perform in the same hydrological way as they did prior to disturbance.</p> <p><i>Note:</i> <i>'disturbance' - means any impact to the landscape, vegetation, air quality, hydrology, habitat, or water quality that has been directly or indirectly caused by human activity associated with the resource activity.</i></p> <p><i>'pre-disturbance' - the condition of the land before any resource activities occurred.</i></p>	As indicated and prior to each wet season.

Condition number	Condition	Timing for condition
13.	<p>(a) All complaints received, and resulting actions taken, about the impact of the approved resource activities on the environmental attributes in the Gulf Rivers Strategic Environmental Area must be recorded. The record must include:</p> <ul style="list-style-type: none"> (i) name, address and contact number of the complainant (ii) time and date of complaint (iii) reasons for the complaint (iv) investigations undertaken (v) conclusions formed (vi) actions taken to resolve the complaint (vii) any abatement measures implemented (viii) person responsible for resolving the complaint. <p>(b) Provide records of any complaints received and recorded in accordance with this condition to the chief executive at RPIAct@dsdilgp.qld.gov.au</p> <p><i>Note: The record of complaint provided to the chief executive must state the application reference number, being RPI24/001.</i></p>	<p>(a) At all times.</p> <p>(b) Within 60 business days of receipt of a complaint.</p>
14.	A full copy of the regional interests development approval must be kept on-site and available to any person(s) contracted to undertake the approved resource activities.	At all times.

General Advice

It is the applicant's responsibility to ensure all relevant approvals and licenses are obtained from the applicable Local, State, and/or Federal Authorities prior to works commencing on site.

Attachment 1 - Approved plan



Legend	
Planet Downr Project Site	
Subject Land	
Gulf Rivers Strategic Environmental Area	
Gulf Rivers Strategic Environmental Area – Designated Precinct	
Seismic Survey Area	
Drainage Lines	
Land Ownership	
1 3SP181805	15 3SP194668
12 2948SP271811	22 2CP907594
13 98K30	24 5SP111112
14 18K21	25 4G1805051
	26 16N74

FIGURE 12
Seismic Survey Area and Land Ownership

Image Source: ESRN Swiremap (2021); Data source: QLD Spatial (2024)