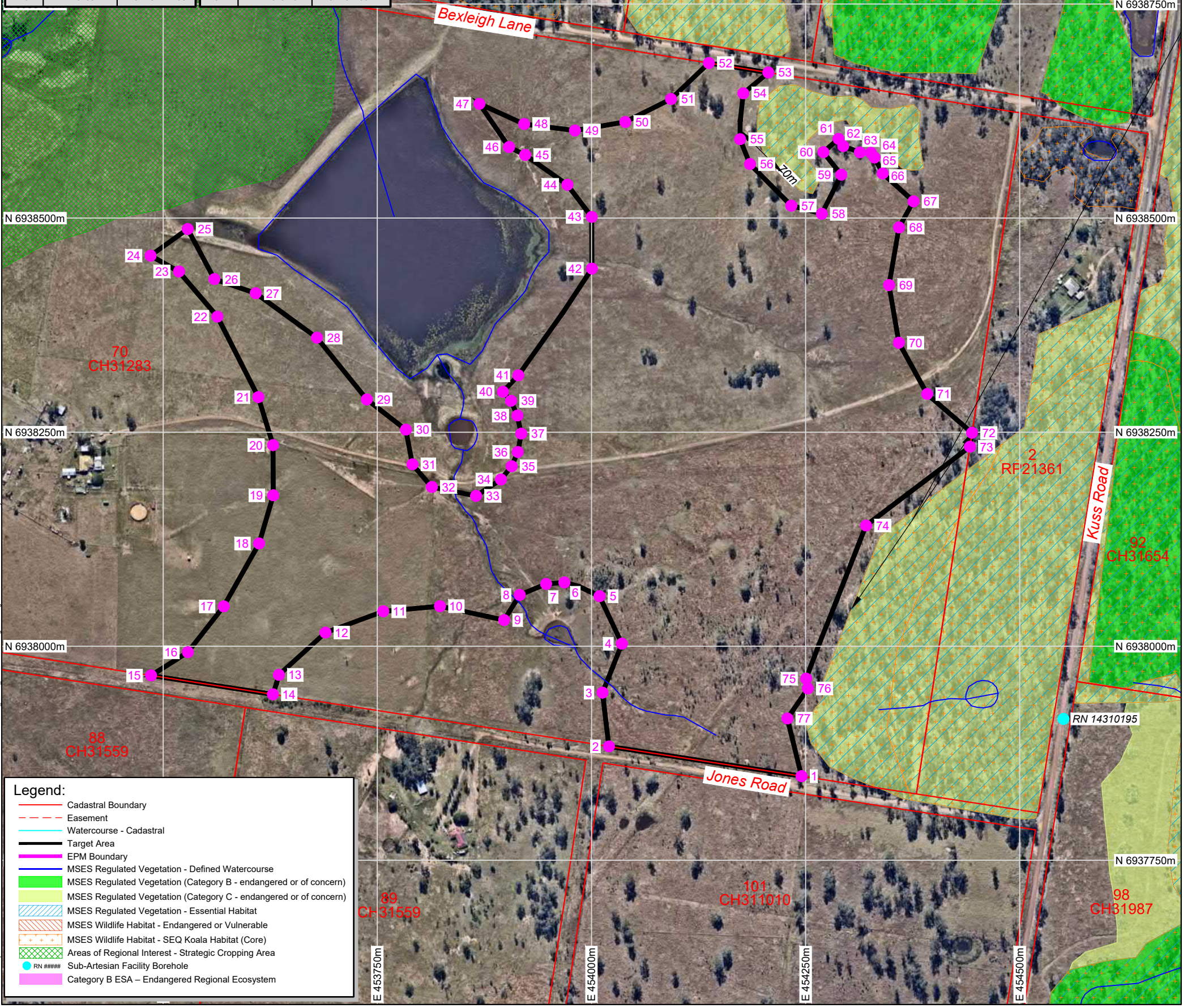
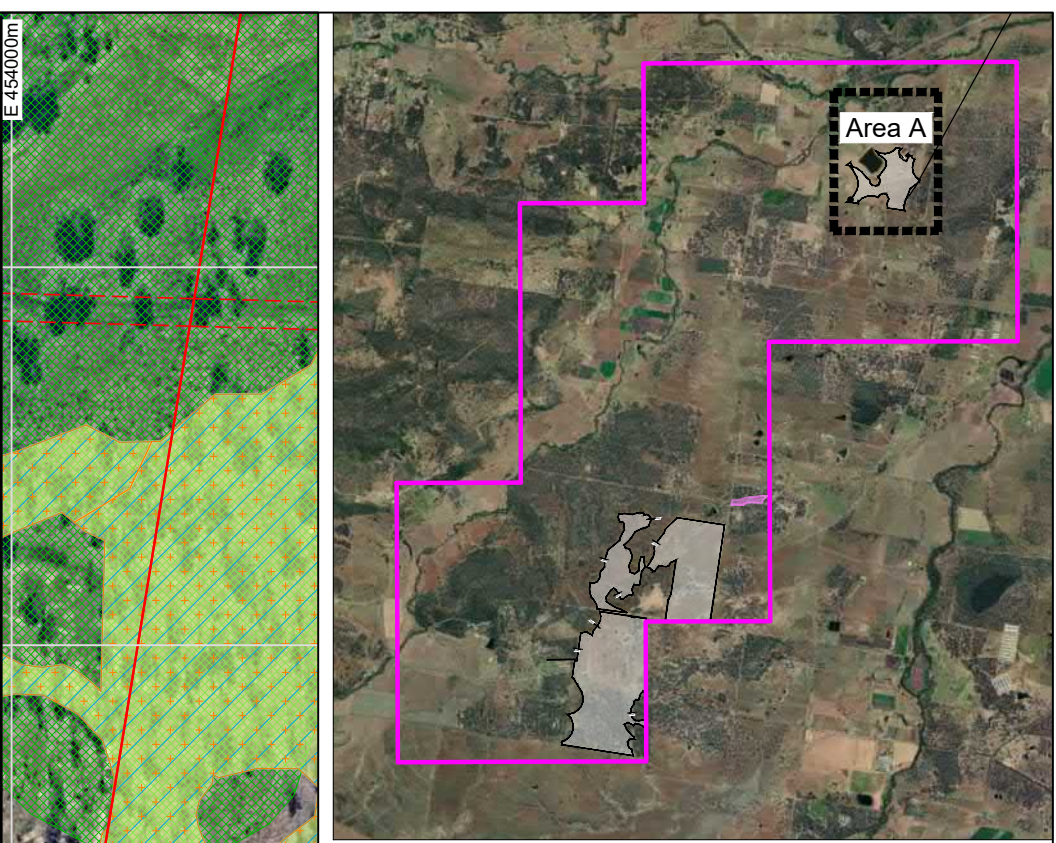


Setout Points Target Area A			Setout Points Target Area A			Setout Points Target Area A		
Point	Latitude	Longitude	Point	Latitude	Longitude	Point	Latitude	Longitude
1	S27° 40' 58.09"	E152° 32' 09.60"	27	S27° 40' 39.68"	E152° 31' 46.42"	53	S27° 40' 31.38"	E152° 32' 08.30"
2	S27° 40' 56.93"	E152° 32' 01.40"	28	S27° 40' 41.38"	E152° 31' 49.02"	54	S27° 40' 32.17"	E152° 32' 07.23"
3	S27° 40' 54.89"	E152° 32' 01.13"	29	S27° 40' 43.73"	E152° 31' 51.14"	55	S27° 40' 33.91"	E152° 32' 07.09"
4	S27° 40' 53.04"	E152° 32' 01.97"	30	S27° 40' 44.88"	E152° 31' 52.79"	56	S27° 40' 34.85"	E152° 32' 07.50"
5	S27° 40' 51.23"	E152° 32' 01.02"	31	S27° 40' 46.20"	E152° 31' 53.07"	57	S27° 40' 36.44"	E152° 32' 09.26"
6	S27° 40' 50.71"	E152° 31' 59.53"	32	S27° 40' 47.06"	E152° 31' 53.89"	58	S27° 40' 36.75"	E152° 32' 10.56"
7	S27° 40' 50.76"	E152° 31' 58.75"	33	S27° 40' 47.41"	E152° 31' 55.77"	59	S27° 40' 35.27"	E152° 32' 11.40"
8	S27° 40' 51.17"	E152° 31' 57.62"	34	S27° 40' 46.79"	E152° 31' 56.84"	60	S27° 40' 34.41"	E152° 32' 10.63"
9	S27° 40' 52.12"	E152° 31' 56.95"	35	S27° 40' 46.29"	E152° 31' 57.30"	61	S27° 40' 33.91"	E152° 32' 11.28"
10	S27° 40' 51.59"	E152° 31' 54.22"	36	S27° 40' 45.75"	E152° 31' 57.56"	62	S27° 40' 34.18"	E152° 32' 11.48"
11	S27° 40' 51.78"	E152° 31' 51.80"	37	S27° 40' 45.05"	E152° 31' 57.71"	63	S27° 40' 34.42"	E152° 32' 12.19"
12	S27° 40' 52.58"	E152° 31' 49.33"	38	S27° 40' 44.37"	E152° 31' 57.55"	64	S27° 40' 34.44"	E152° 32' 12.66"
13	S27° 40' 54.18"	E152° 31' 47.34"	39	S27° 40' 43.80"	E152° 31' 57.28"	65	S27° 40' 34.62"	E152° 32' 12.82"
14	S27° 40' 54.91"	E152° 31' 47.08"	40	S27° 40' 43.46"	E152° 31' 56.93"	66	S27° 40' 35.22"	E152° 32' 13.16"
15	S27° 40' 54.18"	E152° 31' 41.89"	41	S27° 40' 42.84"	E152° 31' 57.59"	67	S27° 40' 36.29"	E152° 32' 14.47"
16	S27° 40' 53.30"	E152° 31' 43.46"	42	S27° 40' 38.80"	E152° 32' 00.75"	68	S27° 40' 37.28"	E152° 32' 13.85"
17	S27° 40' 51.56"	E152° 31' 45.00"	43	S27° 40' 36.83"	E152° 32' 00.75"	69	S27° 40' 39.46"	E152° 32' 13.42"
18	S27° 40' 49.18"	E152° 31' 46.52"	44	S27° 40' 35.61"	E152° 31' 59.72"	70	S27° 40' 41.66"	E152° 32' 13.82"
19	S27° 40' 47.36"	E152° 31' 47.13"	45	S27° 40' 34.48"	E152° 31' 57.92"	71	S27° 40' 43.60"	E152° 32' 15.02"
20	S27° 40' 45.45"	E152° 31' 47.13"	46	S27° 40' 34.17"	E152° 31' 57.24"	72	S27° 40' 45.08"	E152° 32' 16.93"
21	S27° 40' 43.63"	E152° 31' 46.51"	47	S27° 40' 32.52"	E152° 31' 55.98"	73	S27° 40' 45.61"	E152° 32' 16.83"
22	S27° 40' 40.57"	E152° 31' 44.78"	48	S27° 40' 33.30"	E152° 31' 57.89"	74	S27° 40' 48.59"	E152° 32' 12.39"
23	S27° 40' 38.85"	E152° 31' 43.15"	49	S27° 40' 33.55"	E152° 32' 00.05"	75	S27° 40' 54.39"	E152° 32' 09.81"
24	S27° 40' 38.24"	E152° 31' 41.94"	50	S27° 40' 33.24"	E152° 32' 02.20"	76	S27° 40' 54.77"	E152° 32' 09.89"
25	S27° 40' 37.24"	E152° 31' 43.52"	51	S27° 40' 32.37"	E152° 32' 04.15"	77	S27° 40' 55.90"	E152° 32' 09.01"
26	S27° 40' 39.14"	E152° 31' 44.66"	52	S27° 40' 31.01"	E152° 32' 05.77"			



Legend:

- Cadastral Boundary
- - - Easement
- Watercourse - Cadastral
- Target Area
- EPM Boundary
- MSES Regulated Vegetation - Defined Watercourse
- MSES Regulated Vegetation (Category B - endangered or of concern)
- MSES Regulated Vegetation (Category C - endangered or of concern)
- MSES Regulated Vegetation - Essential Habitat
- MSES Wildlife Habitat - Endangered or Vulnerable
- MSES Wildlife Habitat - SEQ Koala Habitat (Core)
- Areas of Regional Interest - Strategic Cropping Area
- Sub-Artesian Facility Borehole
- Category B ESA - Endangered Regional Ecosystem

REV	DESCRIPTION	DATE	BY
1	Point Setout added	16/09/22	MR

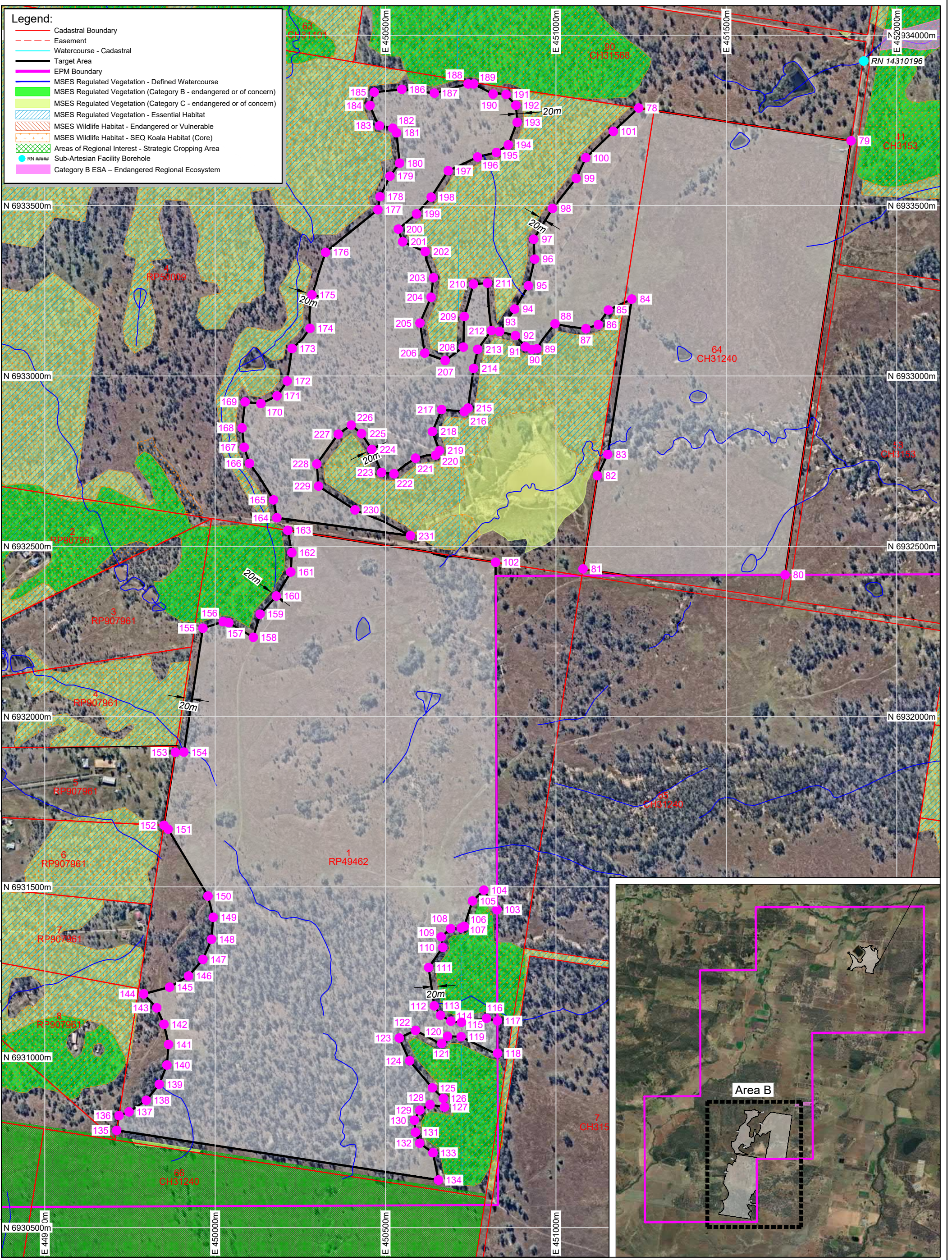
Data Sources:
 Photography: Digital Globe
 Topography: Cadastral
 Ecosystem: Other

Mount Walker EPM 28268
 CLIENT:
The Austral Brick Co. Pty Ltd

Advanced Activity Authorised Areas - Area A

GROUNDWORK plus PH: +61 7 3871 0411 WWW.GROUNDWORK.COM.AU	SCALE: 1:5000 0 100m DATE: 16 September 2022 PRINTED: 16 September 2022	DRAWING NUMBER: 2676.DRG.001A REVISION: DATE: 16 September 2022 DRAWN: MR CHECKED: YD DATUM: HORIZONTAL / VERTICAL / ZONE GDA94 / MGA /
--	---	---

THESE DESIGNS AND PLANS ARE COPYRIGHT AND ARE NOT TO BE USED OR REPRODUCED WHOLLY OR IN PART OR TO BE USED ON ANY PROJECT WITHOUT THE WRITTEN PERMISSION OF GROUNDWORK PLUS PTY LTD. ABN: 13 609 422 791



- Legend:**
- Cadastral Boundary
 - - - Easement
 - Watercourse - Cadastral
 - Target Area
 - EPM Boundary
 - MSES Regulated Vegetation - Defined Watercourse
 - MSES Regulated Vegetation (Category B - endangered or of concern)
 - MSES Regulated Vegetation (Category C - endangered or of concern)
 - MSES Regulated Vegetation - Essential Habitat
 - MSES Wildlife Habitat - Endangered or Vulnerable
 - MSES Wildlife Habitat - SEQ Koala Habitat (Core)
 - Areas of Regional Interest - Strategic Cropping Area
 - RN ##### Sub-Artesian Facility Borehole
 - Category B ESA - Endangered Regional Ecosystem

FILE NAME: F:\Lib\2676\Drawings\Drawings\2676.DWG (D:\1 - Advanced Activity Authorized Areas.dwg)
 CREATED: 16 September 2022
 JOB SUB #:

REV	DESCRIPTION	DATE	BY
1	Point Setout added	16/09/22	MR

Legend:

PROJECT: Mount Walker EPM 28268
CLIENT: The Austral Brick Co. Pty Ltd

TITLE: Advanced Activity Authorized Areas - Area B

SCALE: 1:10000 0 200m When Printed On A3	DRAWING NUMBER: 2676.DRG.001B REVISION: 1
DATE: 16 September 2022 PRINTED: 16 September 2022	DRAWN: MR CHECKED: YD DATUM: HORIZONTAL / VERTICAL / ZONE GDA94 / MGA /

THESE DESIGNS AND PLANS ARE COPYRIGHT AND ARE NOT TO BE USED OR REPRODUCED WHOLLY OR IN PART OR TO BE USED ON ANY PROJECT WITHOUT THE WRITTEN PERMISSION OF GROUNDWORK PLUS PTY LTD. ABN: 13 609 422 791

