

# REGIONAL INTERESTS DEVELOPMENT APPROVAL (RIDA) -

## RPI24/005 Santos – Hector 2, Hector Southeast 3 and Roulette 1

(Given under section 53 of the *Regional Planning Interests Act 2014*)

**Date: 24 December 2024**

### Description of the land

Real property description: Lot 2528 on PH429

Local Government Area: Bulloo Shire Council

### Approved resource activities

The approved resource activities are set out in Table 1 below.

Definitions of the approved resource activities are provided in Table 2 below.

This development approval authorises impacts on the Channel Country Strategic Environmental Area (Designated Precinct) by the approved resource activities.

**Table 1: Approved resource activities: Santos - Hector 2, Hector South East 3 and Roulette 1**

Area of regional interest	Location	Resource activity		Area of disturbance (hectares)
Channel Country Strategic Environmental Area (SEA) (Designated Precinct)	Lot 2528 Plan PH429	Hector 2	1 Well Pad	20.06
			2 Borrow Pits	
			Temporary Work Areas	
			Access Tracks	
			Buried Oil Flowline	
			Buried Gas Flowline	
		Hector Southeast 3	1 Well Pad	9.27
			3 Borrow Pits	
			Access Tracks	
			Buried Oil Flowline	
		Roulette 1	1 Well Pad	13.04
			2 Borrow Pits	
			Access Tracks	
			Buried Oil Flowline	
			Buried Gas Flowline	
<b>Total disturbance area</b>				<b>42.37</b>

**Table 2: Definitions of approved resource activities**

<b>Resource activity</b>	<b>Definition</b>
Petroleum wells	The well will include a well pad, derrick, power generators, pipe handling equipment, tanks, chemical injection skid, drilling sumps, stockpile, flares, and office areas. The well will be of 2-string design with 7-5/8" steel surface casing and 3-1/2" chrome steel tubing.
Gas Flowlines	The gas flowlines will be 100 mm diameter (DN 100) steel pipes, buried (within a trench) approximately 750 mm deep, and being within a Right-of-Way (ROW) with a width of approximately 15 metres.
Oil Flowlines	The oil flowlines will be 100 mm diameter (DN 100) steel pipes, buried (within a trench) approximately 750 mm deep, and being within a Right-of-Way (ROW) with a width of approximately 15 metres.
Access Tracks	Access tracks will be graded and capped with clay (or similar locally available borrow pit material) and featuring a trafficable roadway with table drains on either side. The access tracks will have a width up to 13 metres (and being approximately 8 kilometres in length) and will convey natural surface water flows consistent with existing hydrology.
Borrow Pits	Borrow pits provide source material for construction and maintenance close to well leases, featuring side batters maintained at ~6:1 (maximum of 3:1) and entrance/exit batters maintained at a slope of approximately 7:1. When no longer required, restoration will involve ripping the floor and sides to ~500 mm depth, re-spreading stockpiled topsoil and vegetation, and grading to contour (as per Environmental Authority (EA) conditions for PL 1046).
Temporary Work Area	A cleared designated space established to support operational activities. It includes features such as a temporary administrative office for managing and coordinating tasks, designated zones for storing equipment, materials, and tools, clear signage for safety and informational purposes, and temporary installations for power, lighting, and other essential services.

## Regional interests conditions

A person who is the holder of, or is acting under, this RIDA must not contravene a condition of this approval.

Condition number	Condition	Timing for condition
1.	<p>Carry out the approved resource activities and disturbance of land in the Channel Country Strategic Environmental Area (Designated Precinct) generally in accordance with:</p> <ul style="list-style-type: none"> <li>(a) the resource activities identified in Table 1: Approved resource activities</li> <li>(b) the resource activities defined in Table 2: Definitions of resource activities</li> <li>(c) the stamped approved plans:               <ul style="list-style-type: none"> <li>(i) Figure 1: Hector 2, Hector South East 3, Roulette 1 and PL 1046 Proposed Infrastructure and Construction Disturbance Zone, File No. ENVIR 1017b.WOR prepared by Santos Queensland, Rev 4, dated 21/08/2024 (<b>Attachment 1</b>).</li> <li>(ii) Figure 2: Hector 2, Hector South East 3, Roulette 1 and PL 1046 Regional Location of Proposed Activities, File No. ENVIR 1017a.WOR prepared by Santos Queensland, Rev 3, dated 30/07/2024 (<b>Attachment 1</b>).</li> </ul> </li> </ul>	At all times.
2.	<p>No construction activities are to be undertaken:</p> <ul style="list-style-type: none"> <li>(a) when surface water is present</li> <li>(b) during a flood event/inundation period.</li> </ul>	As indicated.
3.	Implement measures to minimise the diversion of overland flow during construction, operation and decommissioning of the resource activity.	At all times.
4.	<p>Develop and implement erosion and sediment controls which:</p> <ul style="list-style-type: none"> <li>(a) allows stormwater to pass through or around the site in a controlled manner and at non-erosive flow velocities</li> <li>(b) minimise soil erosion resulting from wind, rain and flowing water</li> <li>(c) minimise the duration that disturbed soils are exposed to the erosive forces of wind, rain and flowing water</li> <li>(d) minimise work-related soil erosion and sediment runoff</li> <li>(e) minimise negative impacts to land adjacent to the resource activity.</li> </ul>	At all times.
5.	<p>Contaminants from the resource activities must not be directly or indirectly released to a watercourse / wetland / drainage feature or to the bed or banks of a watercourse / wetland / drainage feature or to groundwater.</p> <p><i>Note: Contaminants mean waste contaminants as defined in Schedule 9 of the Environmental Protection Regulation 2008.</i></p>	At all times.

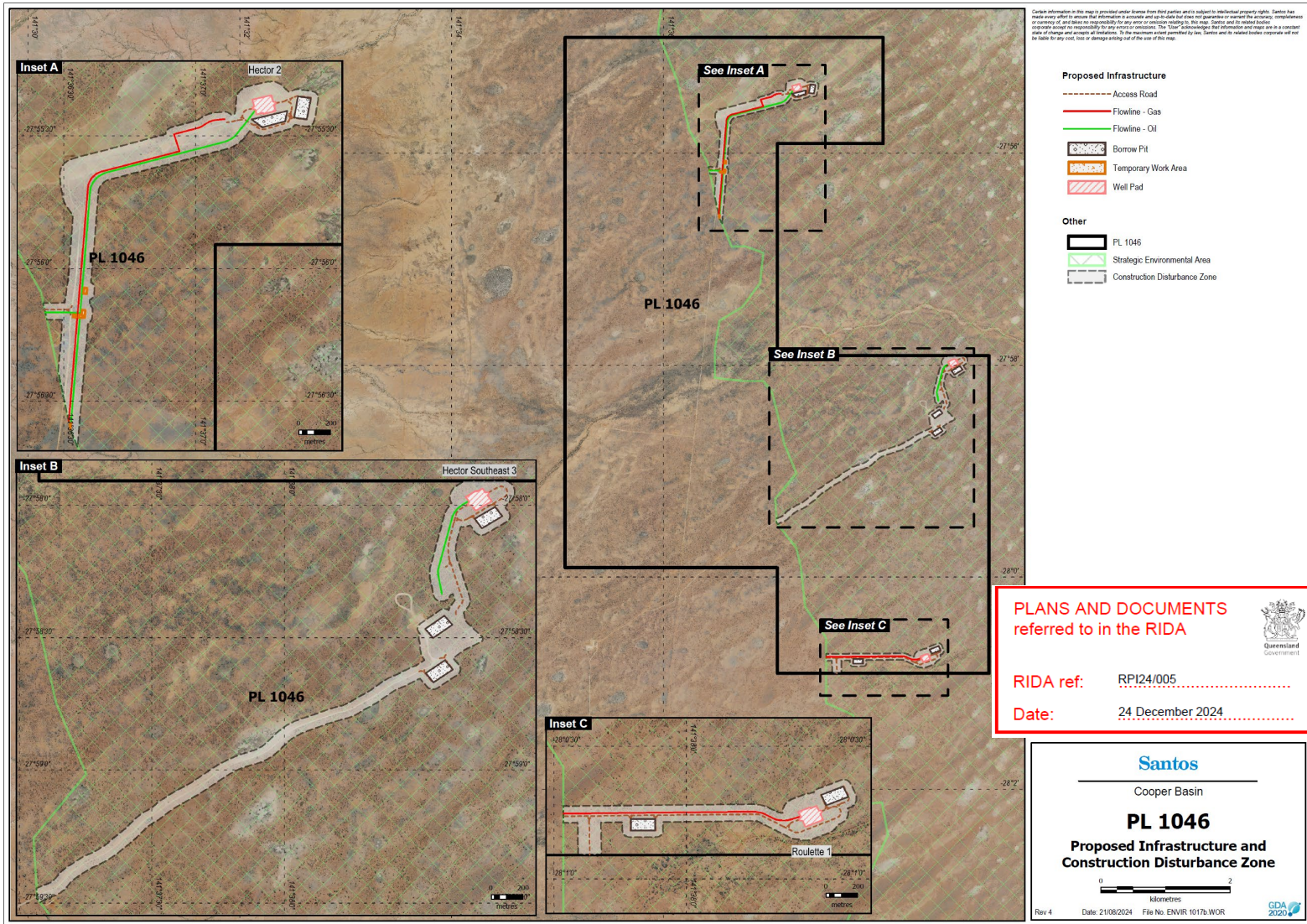
Condition number	Condition	Timing for condition
6.	All petroleum wells must be constructed and abandoned in compliance with the standards outlined in the Code of Practice for the Construction and Abandonment of Petroleum Wells and Associated Bores in Queensland (Version 2, issued 16 December 2019) by the Department of Natural Resources, Mines and Energy.	At all times during construction and abandonment.
7.	Works to maintain tracks and roads across watercourses must be undertaken in such a way as to prevent interference with watercourses: avoiding erosion, sedimentation, diversion, or otherwise degradation of creek or riverbanks and associated vegetation.	At all times
8.	Restore disturbance areas to a pre-disturbance condition.	Within twelve months of completion of resource activity.
9.	<p>Retain records of the pre-disturbance, post-reinstatement and post-restoration condition of disturbance areas and provide these to the chief executive (<a href="mailto:RPIAct@dsdilgp.qld.gov.au">RPIAct@dsdilgp.qld.gov.au</a> application reference number RPI24/005), demonstrating that the impacted land within the Channel Country Strategic Environmental Area has been returned to its pre-disturbance condition. Such records must include:</p> <ul style="list-style-type: none"> <li>(a) photographs of the pre-disturbance site conditions</li> <li>(b) photographs of the post-reinstatement site conditions</li> <li>(c) photographs of the post-restoration site conditions</li> <li>(d) evidence with the records (date and GPS stamped) required by parts (a) to (c) of this condition.</li> </ul> <p><i>Note:</i></p> <p><i>'disturbance'</i> - means any impact to the landscape, vegetation, air quality, hydrology, habitat, or water quality that has been directly or indirectly caused by human activity associated with the resource activity.</p> <p><i>'pre-disturbance'</i> - the condition of the land before any resource activities occurred.</p> <p><i>'post-reinstatement'</i> - following the completion of the resource activity, being the return of the soil to its previous profile, topography and drainage</p> <p><i>'post-restoration'</i> - this is the point at which the ground cover has been established and ponding, erosion, subsidence, etc has been dealt with (being a longer process than the reinstatement phase).</p>	Within three months of completing all post-restoration works.
10.	(a) All complaints received, and resulting actions taken,	(a) At all times.

Condition number	Condition	Timing for condition
	<p>about the impact of the approved resource activities on the environmental attributes in the Channel Country Strategic Environmental Area (Designated Precinct) must be recorded. The record must include:</p> <ul style="list-style-type: none"> <li>(i) name, address and contact number of the complainant</li> <li>(ii) time and date of complaint</li> <li>(iii) reasons for the complaint</li> <li>(iv) investigations undertaken</li> <li>(v) conclusions formed</li> <li>(vi) actions taken to resolve the complaint</li> <li>(vii) any abatement measures implemented</li> <li>(viii) person responsible for resolving the complaint.</li> </ul> <p>(b) Provide records of any complaints received and recorded in accordance with this condition to the chief executive at <a href="mailto:RPIAct@dcdilqp.qld.gov.au">RPIAct@dcdilqp.qld.gov.au</a>.</p> <p><i>Note: The record of complaint provided to the chief executive must state the application reference number, being RPI24/005.</i></p>	<p>(b) Within three business days of receipt of a complaint.</p>
11.	A full copy of the regional interests development approval must be kept on-site and available to any person(s) contracted to undertake the approved resource activities.	At all times

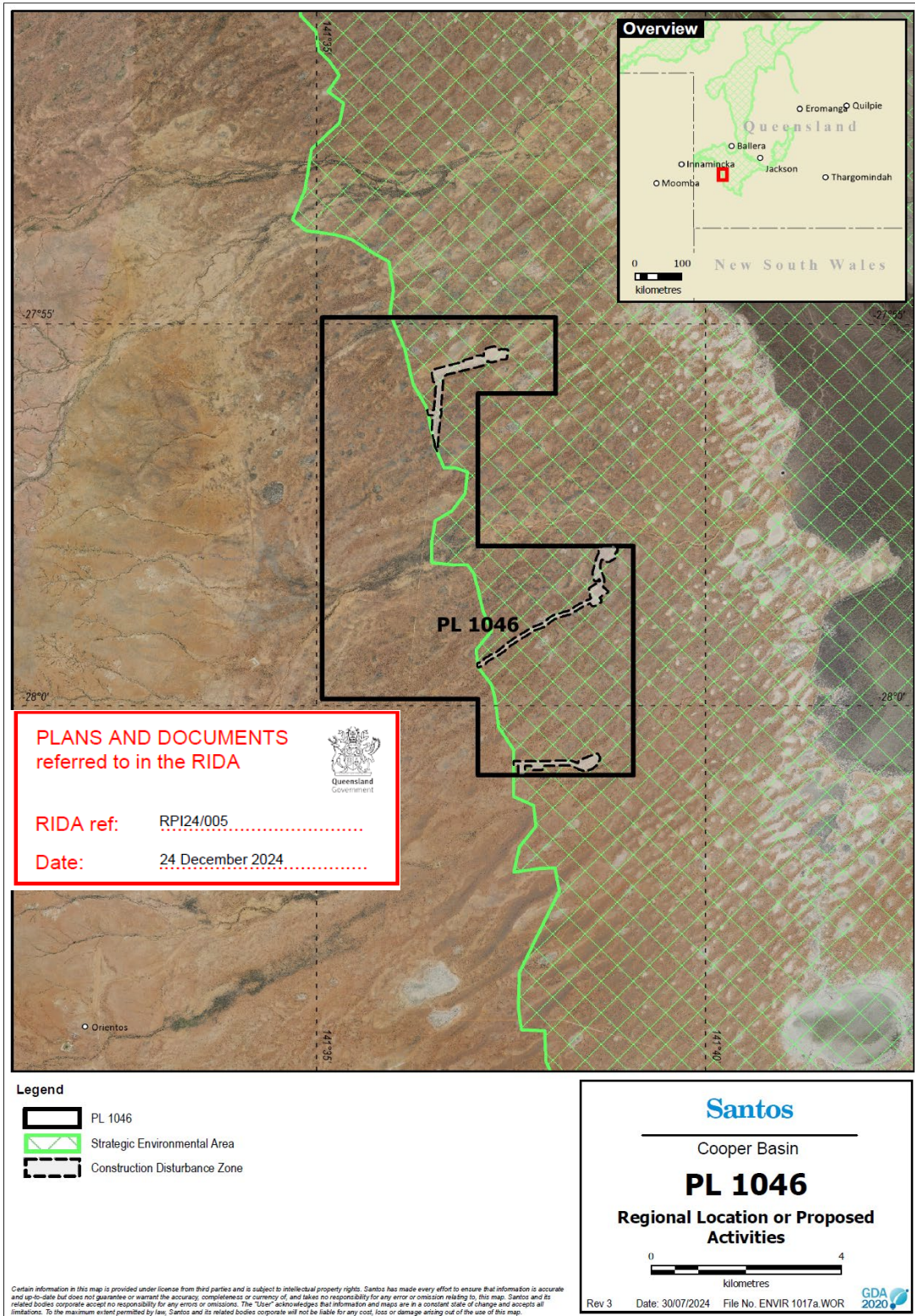
### General Advice

- It is the applicant's responsibility to ensure all relevant approvals and licenses are obtained from the applicable Local, State, and/or Federal Authorities prior to works commencing on site.
- For compliance with Condition 6, particular attention should be given to ensuring the highest quality annulus cement seal if wells are intended for hydraulic stimulation. The use of cement bond logs is recommended to verify the integrity of the cement seal.
- Resource activities must comply with the conditions outlined in the Environmental Authority (EA) EPPG03517415, as amended.

**Attachment 1 - Approved plans**



**Figure 1: Hector 2, Hector South East 3, Roulette 1 and PL 1046 Proposed Infrastructure and Construction Disturbance Zone**



**Figure 2: Hector 2, Hector South East 3, Roulette 1 and PL 1046 Regional Location of Proposed Activities**