

12 October 2022

Chief Executive
Development Assessment Division, Planning Group
Department of State Development, Infrastructure, Local Government and Planning
1 William Street
Brisbane Qld 4000

To the Chief Executive,

Subject: Minor amendment to RPI22/027

In accordance with section 31 of the *Regional Planning Interests Act 2014 (RPI Act)*, please consider this notice of a minor amendment to application RPI22/027.

The amendment addresses two small additional areas of land that were inadvertently left out of the original application. The addition increases the total area of the application from 766 ha to 767 ha, within the real property lots already listed in the application.

To support this amendment, please see attached:

- Updated figures of total application area for which approval is being sought and real property identification information for application area (replacing requirement notice response Attachment 1 – Figures 2 and 3); and
- Updated table listing details of the proposed activities within the application area (replacing requirement notice response Attachment 1 – Table 2) to increase the application area within lots.

Please don't hesitate to contact me if you require any further information or wish to discuss.

Yours sincerely



Alisa Wilkinson
Group Sustainability Manager
RAVENSWOOD GOLD MINE

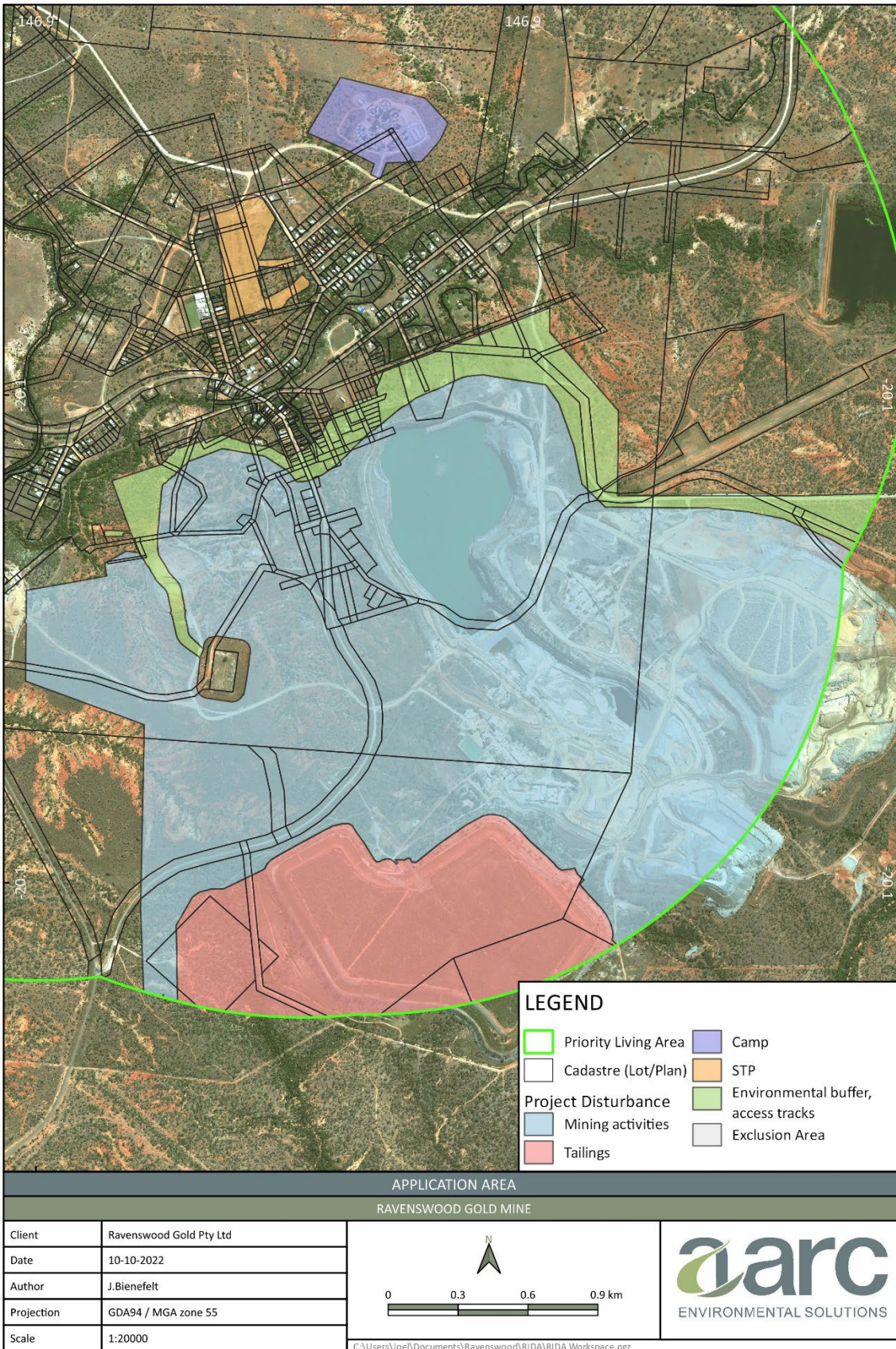


Figure 2. Total application area for which approval is being sought.

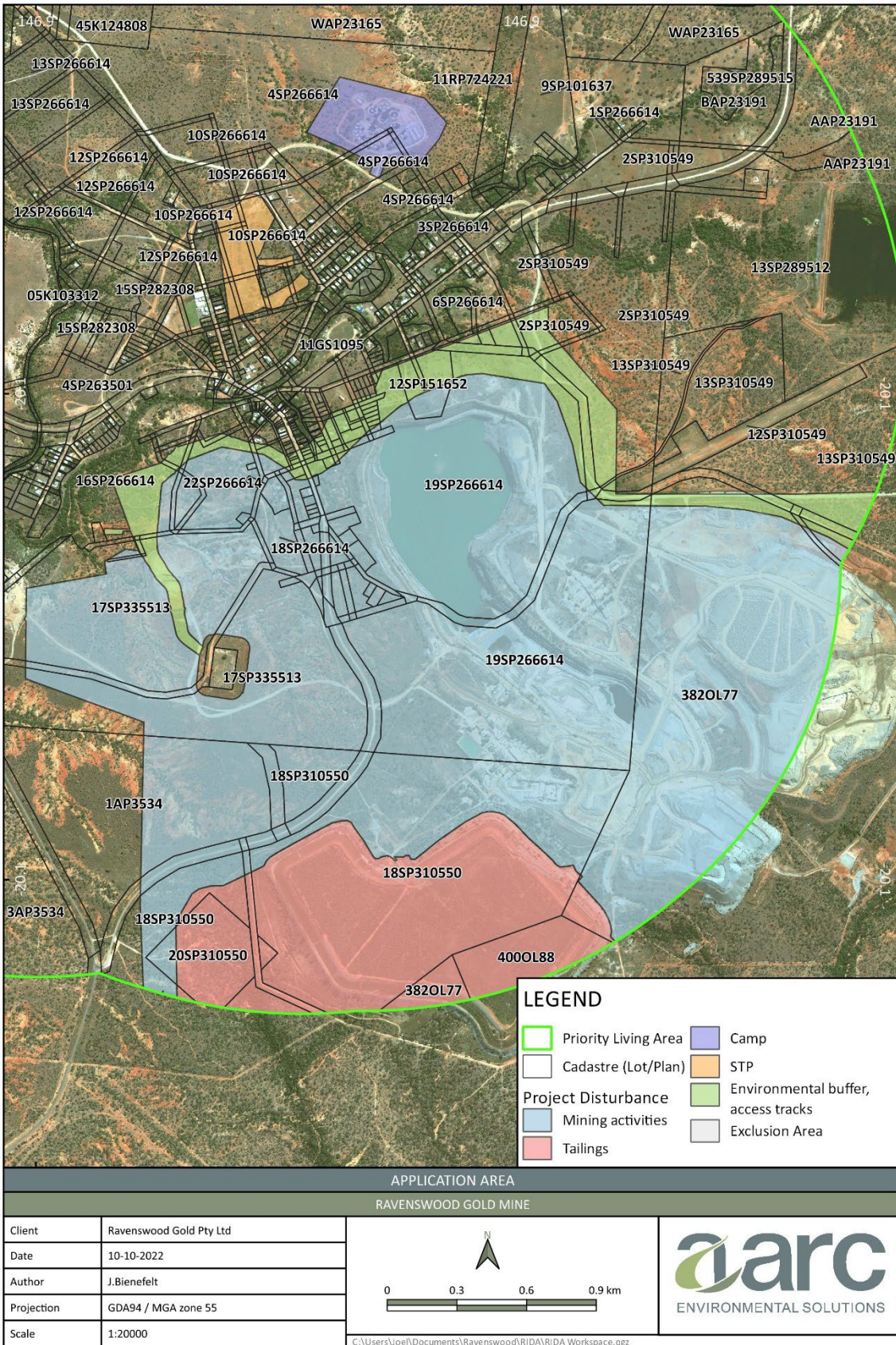


Figure 3. Real property identification information for application area.

Table 2. Details of the proposed activities within the application area.

Activity type	Real property identification	Total lot area (ha)	Application area within lot (ha)	Lot covered by PLA (%)	Application area within lot (%)
Mining activities	12SP151652	5.28	1.89	100%	36%
Mining activities	14GS696	0.83	0.83	100%	100%
Mining activities	16SP266614	36.74	1.27	100%	3%
Mining activities	17SP335513	138.61	92.28	100%	67%
Mining activities	180MPH25918	0.20	0.20	100%	100%
Mining activities	18SP266614	9.46	9.37	100%	99%
Mining activities	18SP310550	193.40	61.48	75%	31.8%
Mining activities	19SP266614	190.73	180.69	100%	95%
Mining activities	1AP15923	0.10	0.10	100%	100%
Mining activities	1AP3534	63.29	26.66	100%	42%
Mining activities	1MPH25957	0.41	0.41	100%	100%
Mining activities	1MPH32554	0.20	0.20	100%	100%
Mining activities	1MPH35636	0.12	0.12	100%	100%
Mining activities	1MPH4670	0.10	0.10	100%	100%
Mining activities	1MPH4711	0.16	0.16	100%	100%
Mining activities	1MPH4714	0.41	0.41	100%	100%

Activity type	Real property identification	Total lot area (ha)	Application area within lot (ha)	Lot covered by PLA (%)	Application area within lot (%)
Mining activities	1MPH4720	0.01	0.01	100%	100%
Mining activities	1R16230	1.29	1.29	100%	100%
Mining activities	1R16235	0.20	0.20	100%	100%
Mining activities	1SP273486	0.43	0.43	100%	100%
Mining activities	20SP310550	15.01	1.75	100%	12%
Mining activities	20MPH25919	0.10	0.10	100%	100%
Mining activities	21MPH25919	0.10	0.10	100%	100%
Mining activities	22GS43	0.82	0.82	100%	100%
Mining activities	22MPH25919	0.10	0.10	100%	100%
Mining activities	22SP266614	14.84	10.71	100%	72%
Mining activities	2R16229	0.20	0.20	100%	100%
Mining activities	382OL77	1203.00	130.66	12%	11%
Mining activities	3R16236	0.19	0.19	100%	100%
Mining activities	4MPH25920	0.08	0.01	100%	15%
Mining activities	76MPH25920	0.15	0.11	100%	74%
Mining activities	Road reserve	-	34.28	-	-
Tailings	18SP310550	193.43	86.61	75%	45%
Tailings	20SP310550	15.01	13.58	98%	90%



RAVENSWOOD GOLD

Activity type	Real property identification	Total lot area (ha)	Application area within lot (ha)	Lot covered by PLA (%)	Application area within lot (%)
Tailings	382OL77	1203.00	7.37	12%	1%
Tailings	400OL88	81.10	13.44	100%	17%
Tailings	Road reserve	-	2.42	-	-
Environmental buffer, access tracks	113MPH25920	0.10	0.01	100%	10%
Environmental buffer, access tracks	114MPH25920	0.05	0.03	100%	70%
Environmental buffer, access tracks	115MPH25920	0.09	0.09	100%	100%
Environmental buffer, access tracks	116MPH25920	0.08	0.08	100%	100%
Environmental buffer, access tracks	116R16210	0.10	0.03	100%	34%
Environmental buffer, access tracks	117MPH25920	0.10	0.10	100%	100%
Environmental buffer, access tracks	117R16210	0.06	0.06	100%	100%
Environmental buffer, access tracks	118R16210	0.07	0.07	100%	100%
Environmental buffer, access tracks	119R16210	0.09	0.09	100%	100%
Environmental buffer, access tracks	12SP151652	5.28	3.28	100%	62%
Environmental buffer, access tracks	13SP310549	117.23	4.19	29%	4%
Environmental buffer, access tracks	16SP266614	36.74	5.49	100%	15%
Environmental buffer, access tracks	17SP335513	138.61	3.41	100%	3%
Environmental buffer, access tracks	18SP266614	9.46	0.08	100%	1%
Environmental buffer, access tracks	19SP266614	190.73	9.99	100%	5%



RAVENSWOOD GOLD

Activity type	Real property identification	Total lot area (ha)	Application area within lot (ha)	Lot covered by PLA (%)	Application area within lot (%)
Environmental buffer, access tracks	1MPH14402	0.00	0.00	100%	100%
Environmental buffer, access tracks	1MPH25920	0.40	0.40	100%	100%
Environmental buffer, access tracks	1MPH31120	0.41	0.38	100%	94%
Environmental buffer, access tracks	1MPH4670	0.11	0.01	100%	9%
Environmental buffer, access tracks	1MPH4707	0.40	0.36	100%	88%
Environmental buffer, access tracks	1MPH4711	0.39	0.23	100%	59%
Environmental buffer, access tracks	1MPH4720	0.20	0.19	100%	95%
Environmental buffer, access tracks	1SP264429	0.28	0.10	100%	36%
Environmental buffer, access tracks	201R16210	0.08	0.08	100%	100%
Environmental buffer, access tracks	202R16210	0.04	0.04	100%	100%
Environmental buffer, access tracks	203R16210	0.09	0.06	100%	72%
Environmental buffer, access tracks	22SP266614	14.84	1.95	100%	13%
Environmental buffer, access tracks	23SP266614	2.15	0.63	100%	29%
Environmental buffer, access tracks	24SP266614	0.11	0.06	100%	55%
Environmental buffer, access tracks	2MPH25920	0.21	0.21	100%	100%
Environmental buffer, access tracks	2MPH31120	0.12	0.12	100%	100%



RAVENSWOOD GOLD

Activity type	Real property identification	Total lot area (ha)	Application area within lot (ha)	Lot covered by PLA (%)	Application area within lot (%)
Environmental buffer, access tracks	2SP310549	71.23	8.55	100%	12%
Environmental buffer, access tracks	382OL77	1203.00	4.33	12%	0%
Environmental buffer, access tracks	3MPH25920	0.14	0.14	100%	100%
Environmental buffer, access tracks	4MPH25920	0.51	0.49	100%	98%
Environmental buffer, access tracks	51MPH25920	0.07	0.05	100%	67%
Environmental buffer, access tracks	52MPH25920	0.10	0.08	100%	85%
Environmental buffer, access tracks	53MPH25920	0.11	0.03	100%	25%
Environmental buffer, access tracks	58MPH25920	0.11	0.04	100%	33%
Environmental buffer, access tracks	59MPH25920	0.11	0.03	100%	31%
Environmental buffer, access tracks	60MPH25920	0.11	0.03	100%	29%
Environmental buffer, access tracks	61MPH25920	0.17	0.05	100%	31%
Environmental buffer, access tracks	6SP266614	8.04	1.31	100%	16%
Environmental buffer, access tracks	71MPH25920	0.15	0.15	100%	100%
Environmental buffer, access tracks	72MPH25920	0.14	0.14	100%	100%
Environmental buffer, access tracks	73MPH25920	0.13	0.13	100%	100%
Environmental buffer, access tracks	74MPH25920	0.12	0.12	100%	100%



RAVENSWOOD GOLD

Activity type	Real property identification	Total lot area (ha)	Application area within lot (ha)	Lot covered by PLA (%)	Application area within lot (%)
Environmental buffer, access tracks	75MPH25920	0.11	0.11	100%	100%
Environmental buffer, access tracks	76MPH25920	0.04	0.04	100%	100%
Environmental buffer, access tracks	Road reserve	-	11.69	-	-
STP	10SP266614	26.84	5.73	100%	21%
STP	9SP266614	8.70	3.21	100%	37%
STP	Road reserve	-	2.44	-	-
Camp	4SP266614	95.00	15.17	100%	16%
Camp	Road reserve	-	0.73	-	-